

**Historisch**  
**Kulturwissenschaftliche**  
**Informationsverarbeitung**

## Evaluation of Format Conversion Demo

[planetarium.hki.uni-koeln.de](http://planetarium.hki.uni-koeln.de)

Jan Schnasse

November 18<sup>th</sup> Bern

# Evaluation of Format Conversion Demo

---

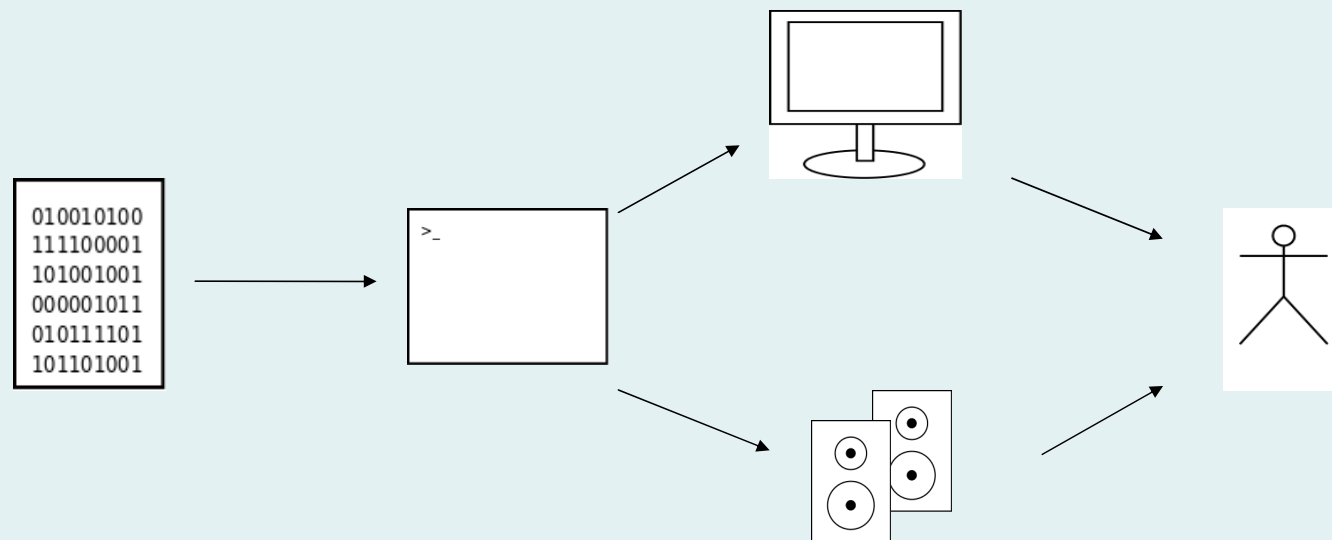
## Part I Introduction



Jan Schnasse

November 18<sup>th</sup> Bern The logo for the Planets project, consisting of three overlapping blue circles of increasing size to the right of the word "planets" in a bold, lowercase, sans-serif font.

## Data, Perception, Information

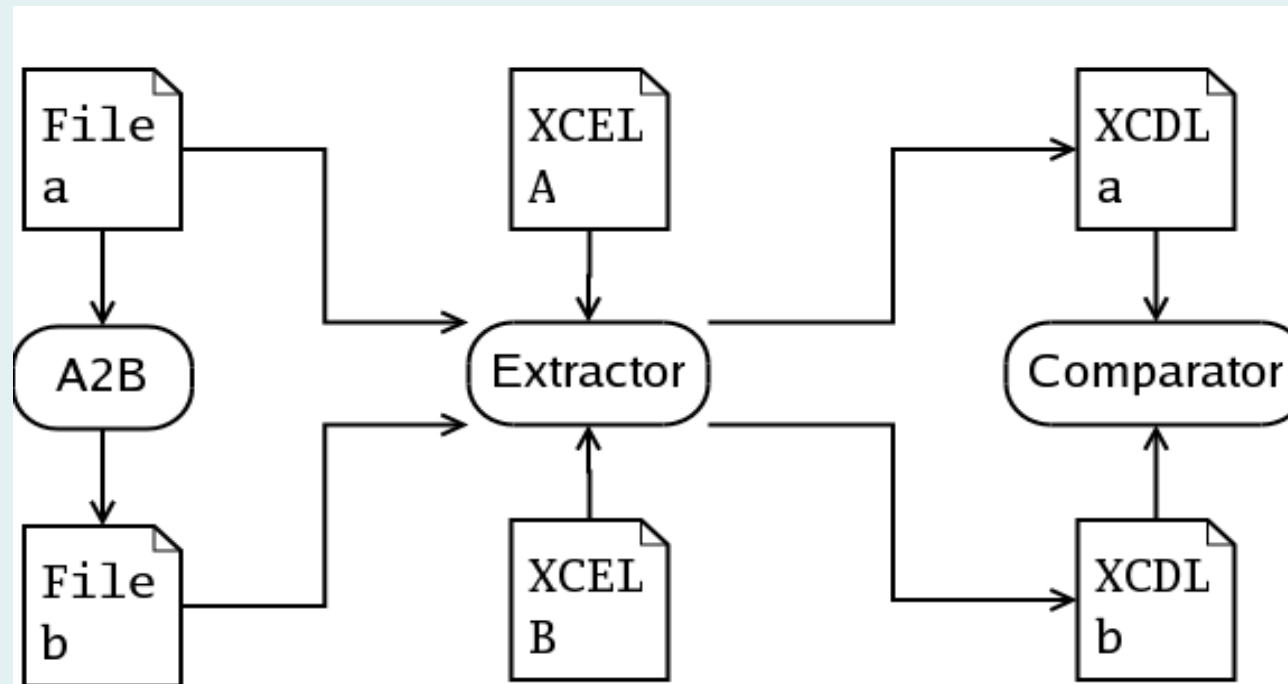


Jan Schnasse

November 18<sup>th</sup> Bern 

## The Planets XCL Approach - Overview

### Evaluation of Format Conversion



# Evaluation of Format Conversion Demo

---

## Part II Demo



Jan Schnasse

November 18<sup>th</sup> Bern The logo for the Planets project, consisting of three overlapping blue circles of increasing size to the right of the word "planets" in a bold, lowercase, sans-serif font.

## Evaluation of Format Conversion Demo

---

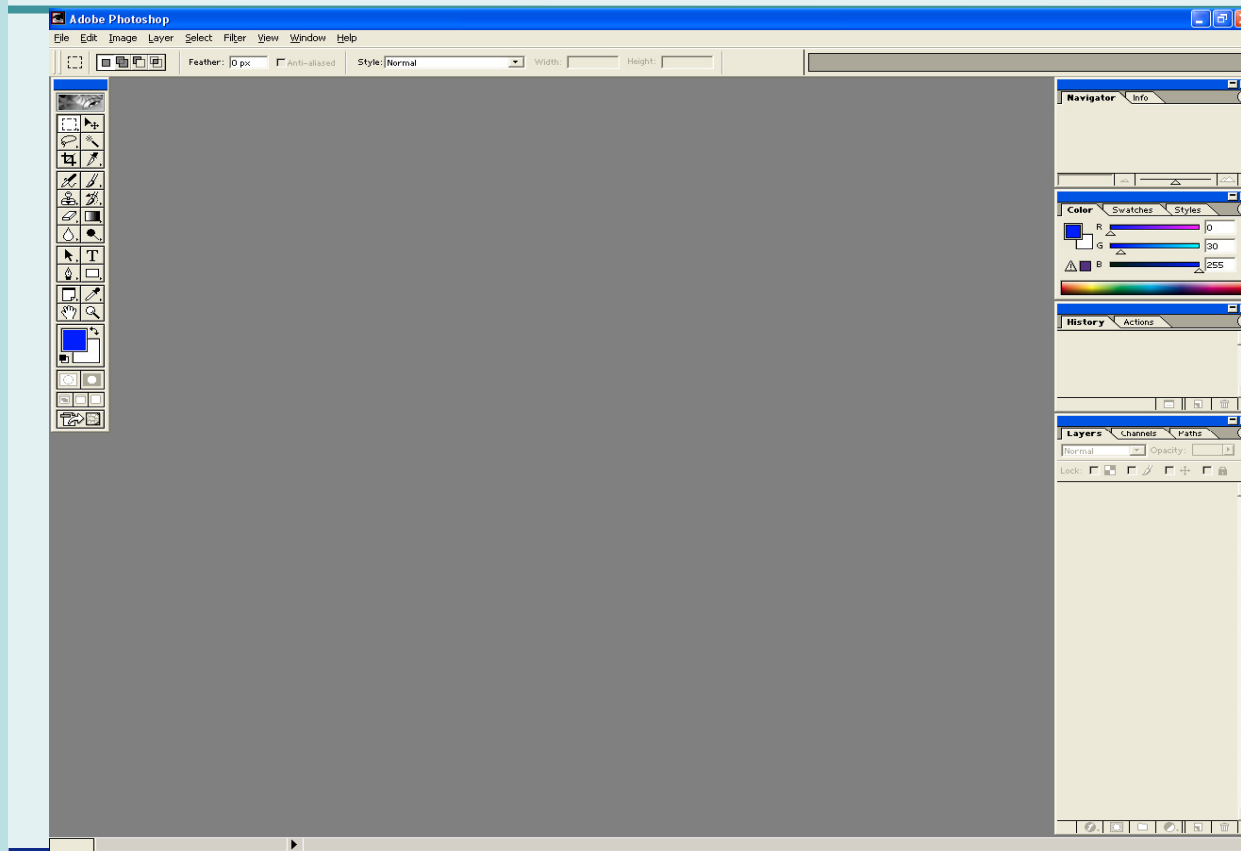
# Screenshots (Disaster Slides)



Jan Schnasse

November 18<sup>th</sup> Bern The logo for the Planets project, consisting of three overlapping blue circles of different sizes and the word "planets" in a lowercase, sans-serif font.

## File conversion with photoshop

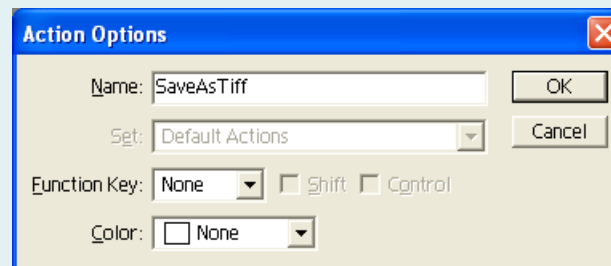


Jan Schnasse

November 18<sup>th</sup> Bern 

## File conversion with photoshop

---





## File conversion with photoshop

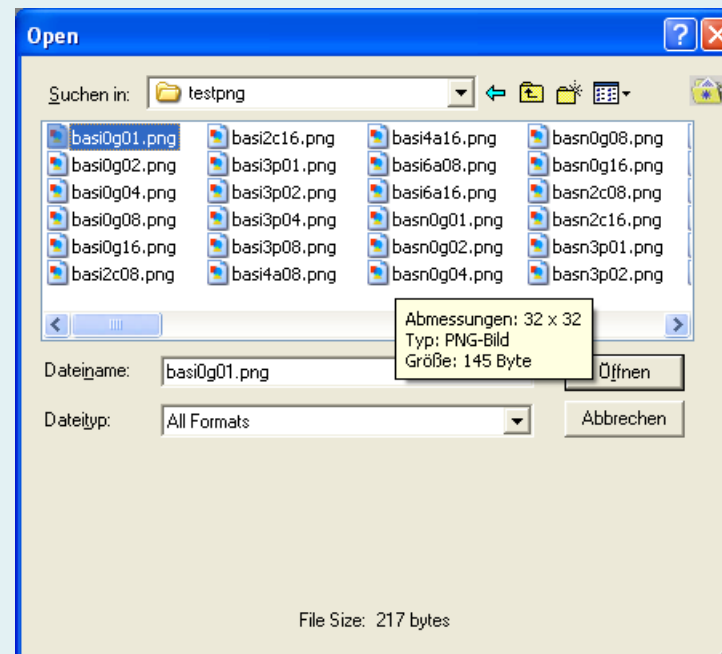
---



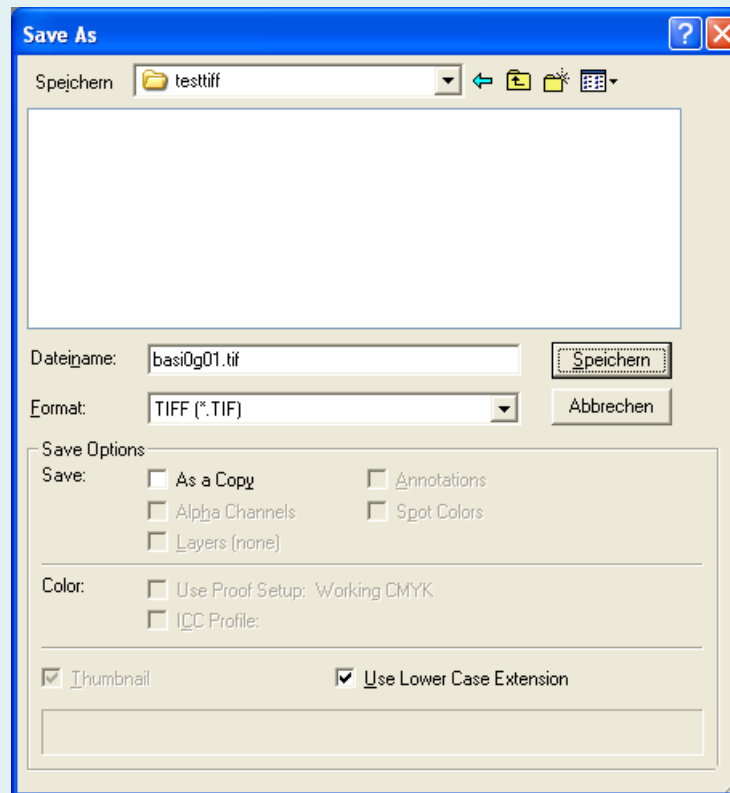
Jan Schnasse

November 18<sup>th</sup> Bern 

## File conversion with photoshop



## File conversion with photoshop

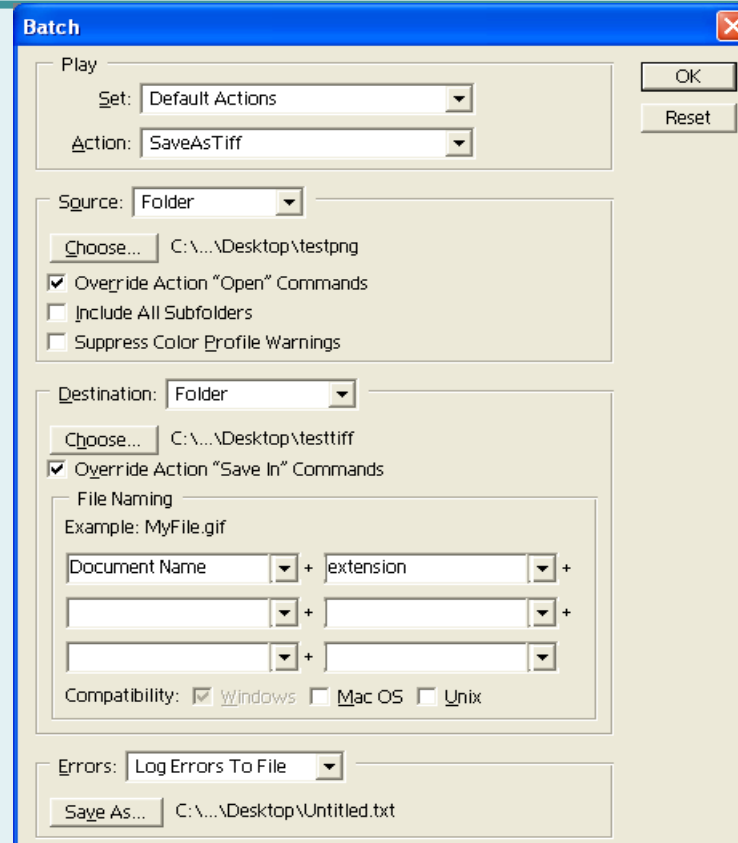


Jan Schnasse

November 18<sup>th</sup> Bern



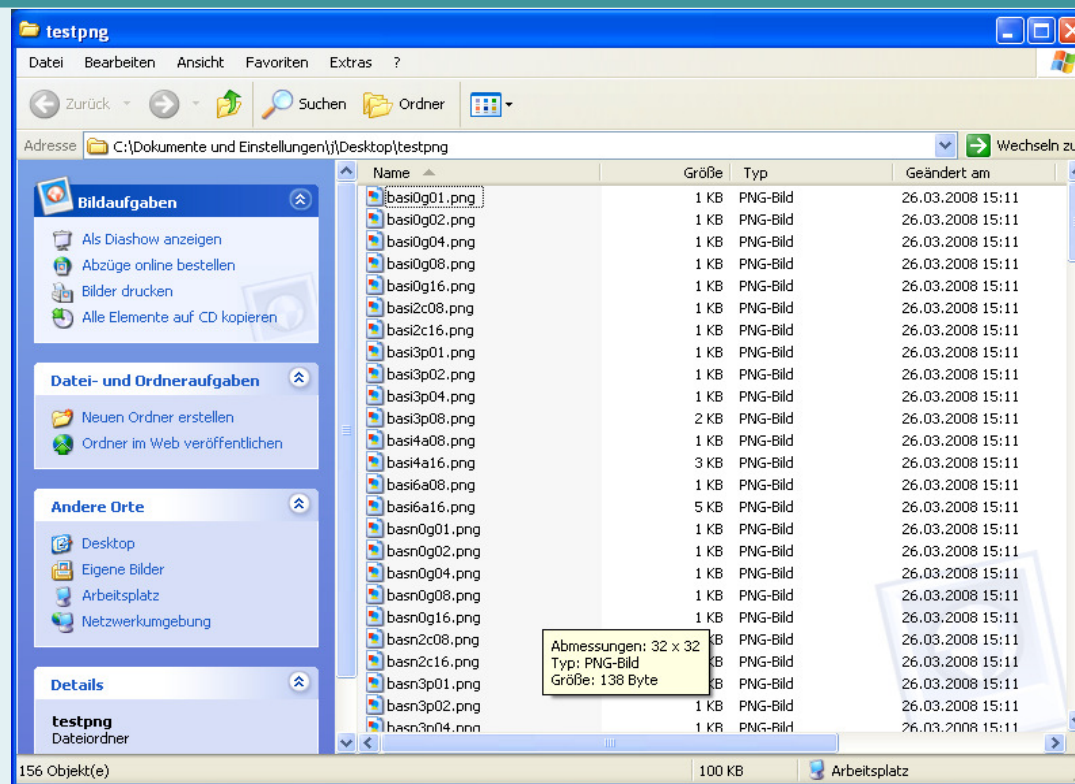
## File conversion with photoshop



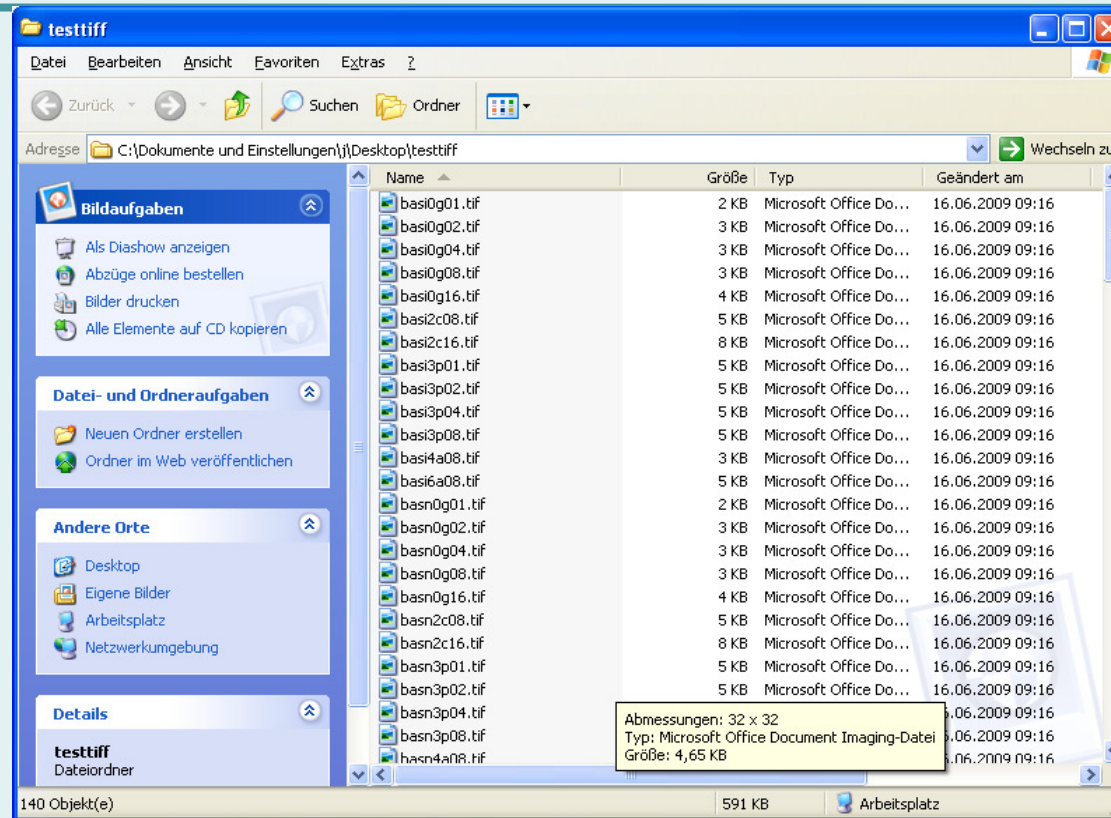
Jan Schnasse

November 18<sup>th</sup> Bern The 'planets' logo, consisting of three overlapping blue circles of varying sizes to the left of the word 'planets' in a bold, sans-serif font.

## File conversion with photoshop



## File conversion with photoshop

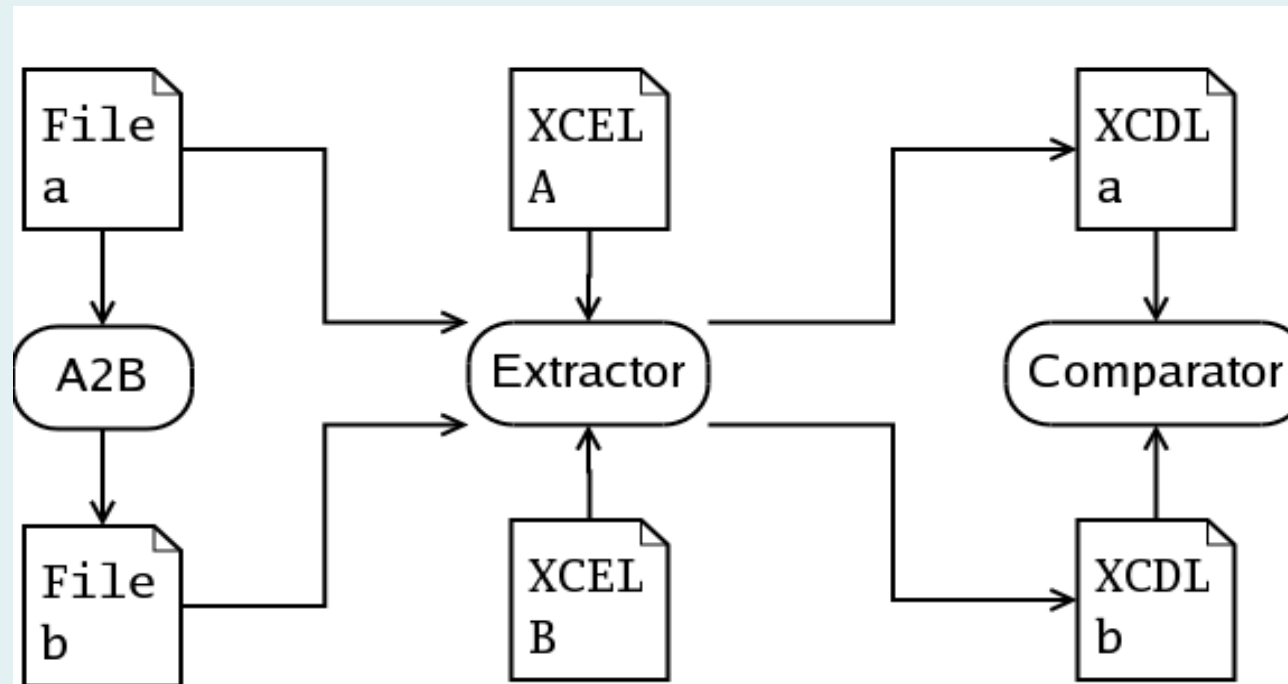


Jan Schnasse

November 18<sup>th</sup> Bern 

## The Planets XCL Approach - Overview

### Evaluation of Format Conversion



## The Planets XCL Approach – Further Information

---

[www.planets-project.eu](http://www.planets-project.eu)

planetarium.hki.uni-koeln.de

- Source
- Win32 executables
- Documentation
- Schemas
- Testresults

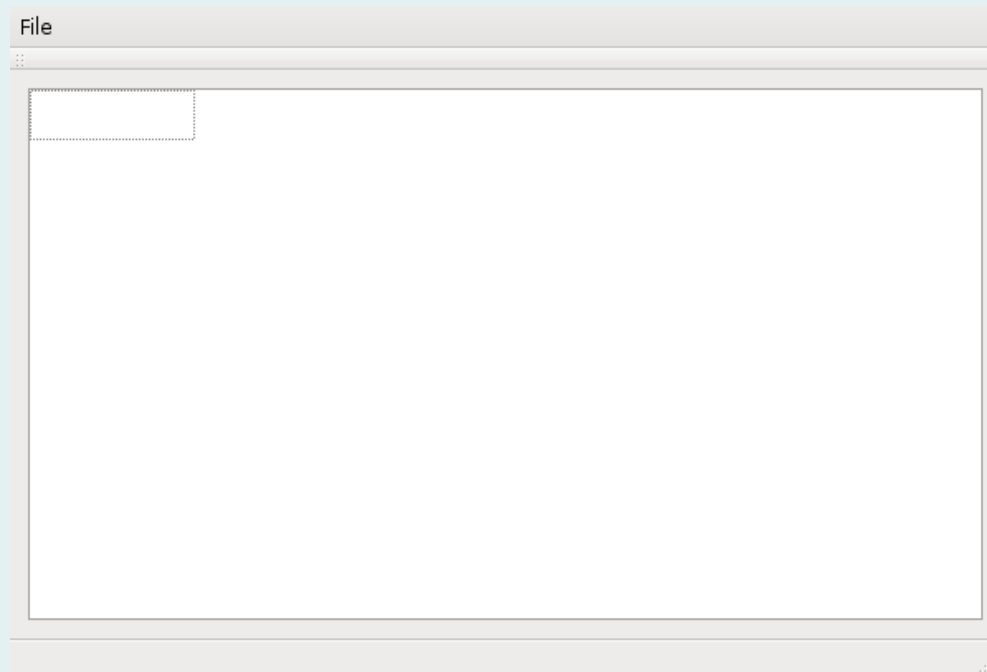


Jan Schnasse

November 18<sup>th</sup> Bern The Planets logo, consisting of three overlapping blue circles of increasing size to the right, followed by the word "planets" in a bold, lowercase, sans-serif font.



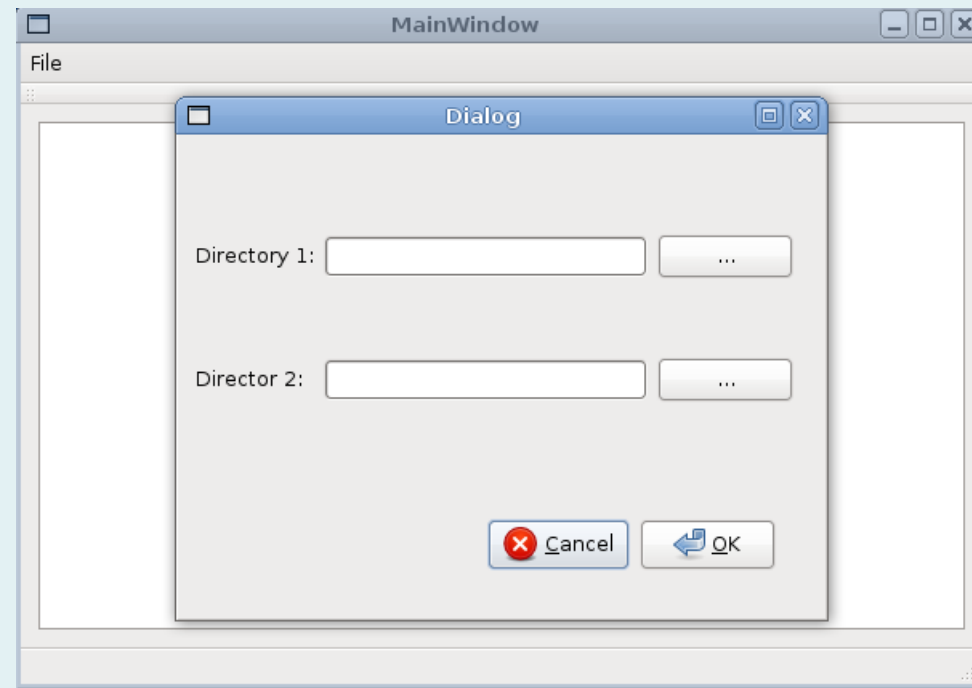
## Evaluation of Results



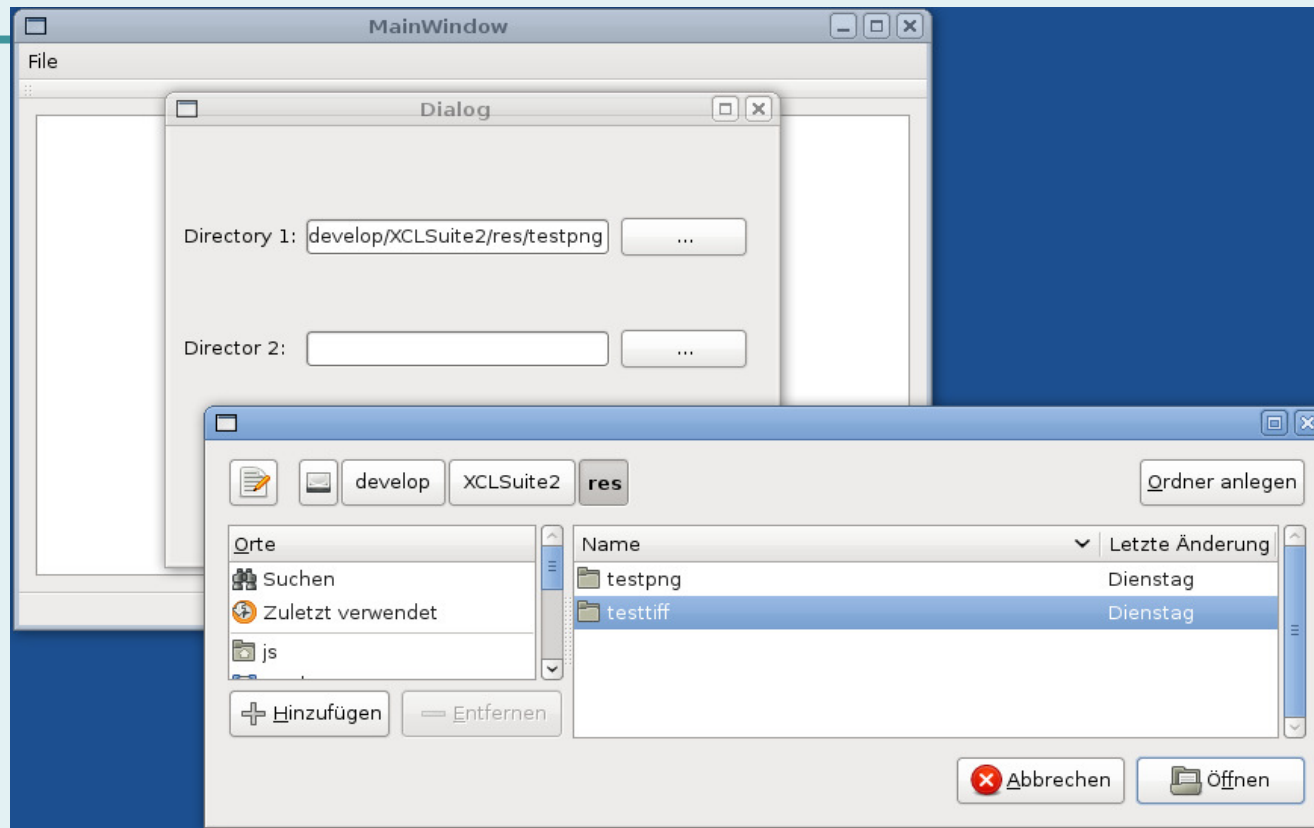
Jan Schnasse

November 18<sup>th</sup> Bern  planets

## Evaluation of Results



## Evaluation of Results



Jan Schnasse

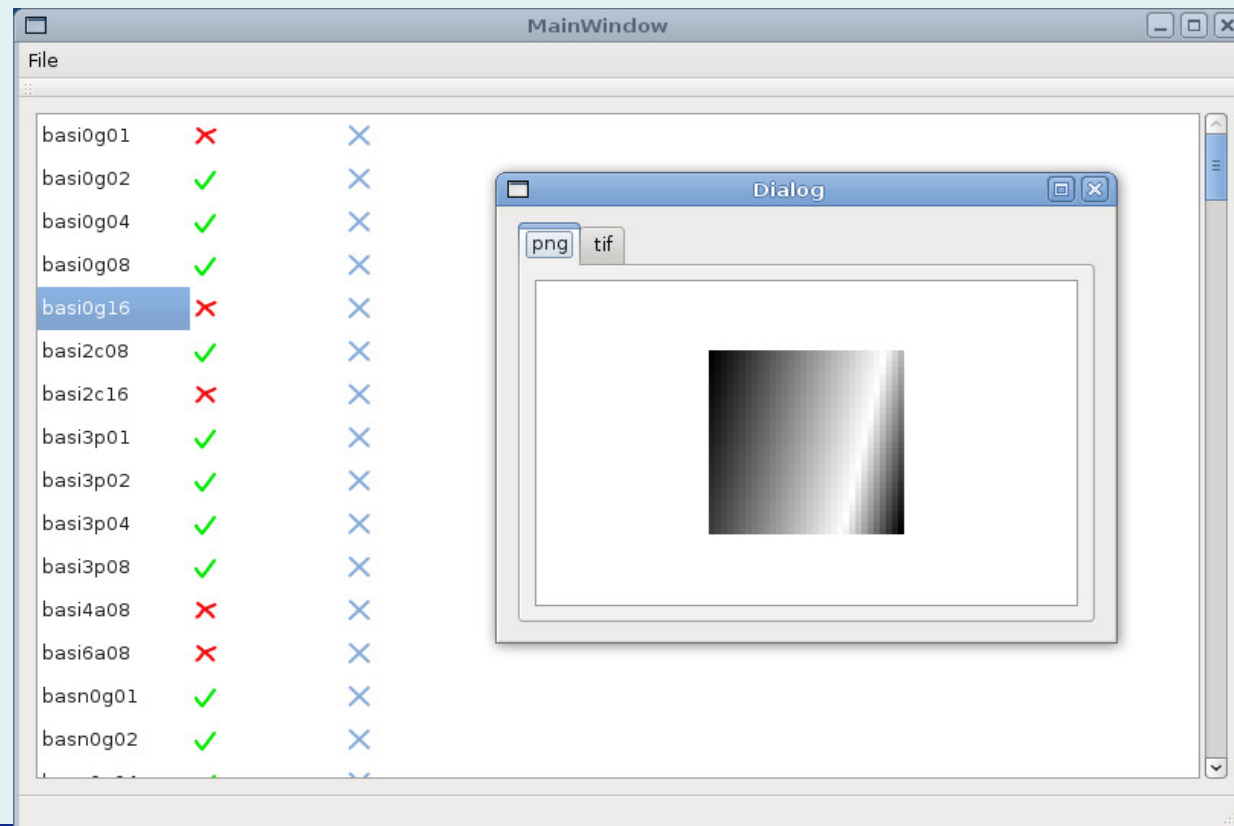
November 18<sup>th</sup> Bern 

## Evaluation of Results

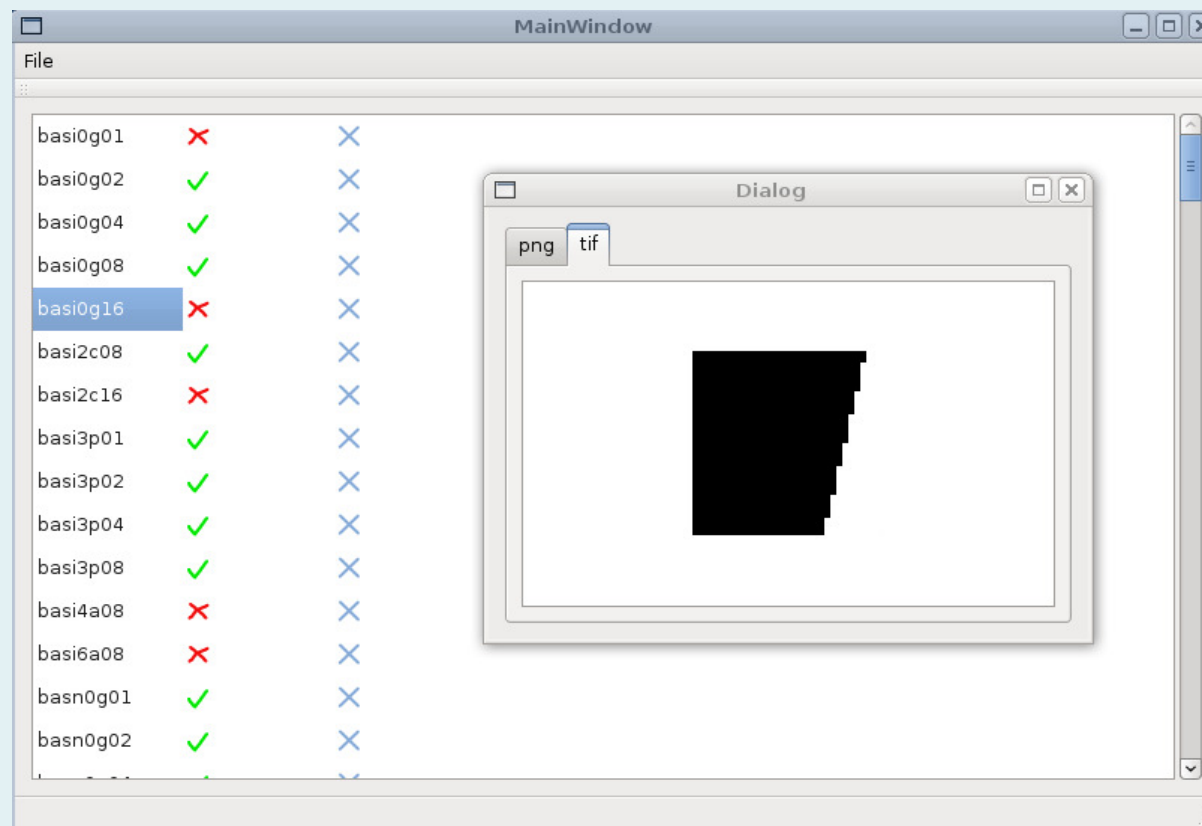
File		
basi0g01	✗	✗
basi0g02	✓	✗
basi0g04	✓	✗
basi0g08	✓	✗
basi0g16	✗	✗
basi2c08	✓	✗
basi2c16	✗	✗
basi3p01	✓	✗



## Evaluation of Results



## Evaluation of Results



Jan Schnasse

November 18<sup>th</sup> Bern 

## Evaluation of Results

The screenshot shows a software window titled 'MainWindow' with a 'File' menu and a 'Dialog' window. The 'Dialog' window displays the results for the test case 'basi0g16'.

Test Case	Result
basi0g01	✗
basi0g02	✓
basi0g04	✓
basi0g08	✓
basi0g16	✗
basi2c08	✓
basi2c16	✗
basi3p01	✓
basi3p02	✓
basi3p04	✓
basi3p08	✓
basi4a08	✗
basi6a08	✗
basn0g01	✓
basn0g02	✓
basn0g04	✓
basn0g08	✓
basn0g16	✗

Detailed view for 'basi0g16':

- Property: colourSpaceName  
Metric: equal  
Result: **false**
- Property: imageHeight  
Metric: equal  
Result: **true**
- Property: imageWidth  
Metric: equal  
Result: **true**
- Property: normData  
Metric: hammingDistance  
Result: **516**



## Evaluation of Results

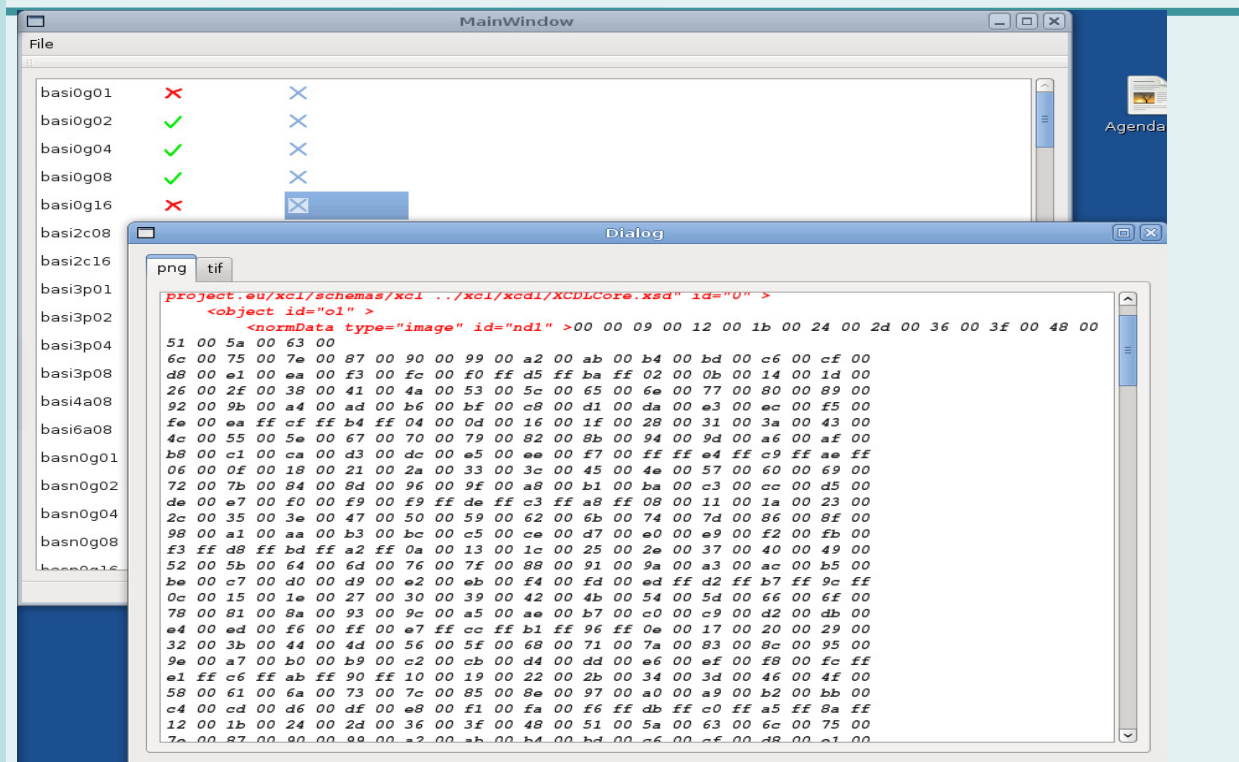
The screenshot displays a software window titled 'MainWindow' with a 'File' menu. Below the menu is a list of identifiers: basi0g01, basi0g02, basi0g04, basi0g08, basi0g16, basi2c08, basi2c16, basi3p01, basi3p02, basi3p04, basi3p08, basi4a08, basi6a08, basn0g01, basn0g02, basn0g04, and basn0g08. To the right of each identifier are two columns of status indicators: red 'X' marks and blue 'X' marks. For example, 'basi0g01' has a red 'X' in the first column and a blue 'X' in the second, while 'basi0g02' has a green checkmark in the first column and a blue 'X' in the second. A 'Dialog' window is open in the foreground, showing a 'png' tab. It contains XML-like code: 

```
<project eu/xcl/schemas/xcl ../xcl/xcd1/XCDLCore.xsd" id="0" >  
<object id="o1" >  
  <normData type="image" id="nd1" >00 00 0a 00 12 00 1c 00 24 00 2e 00 36 00 40 00 48 00  
52 00 5a 00 64 00  
6c 00 76 00 7e 00 88 00 90 00 9a 00 a2 00 ac 00 b4 00 ba 00 c6 00 d0 00  
d8 00 e2 00 ea 00 f4 00 fc 00 ef ff d5 ff b9 ff 02 00 0c 00 14 00 1e 00  
26 00 30 00 38 00 42 00 4a 00 54 00 5c 00 66 00 6e 00 78 00 80 00 8a 00  
92 00 9c 00 a4 00 ae 00 b6 00 c0 00 c8 00 d2 00 da 00 ea 00 ec 00 f6 00  
fe 00 e9 ff cf ff b3 ff 04 00 0e 00 16 00 20 00 28 00 32 00 3a 00 44 00  
4c 00 56 00 5e 00 68 00 70 00 7a 00 82 00 8c 00 94 00 9e 00 a6 00 b0 00  
b8 00 c2 00 ca 00 d4 00 dc 00 ee 00 ef ff e3 ff c9 ff ad ff  
06 00 10 00 18 00 22 00 2a 00 34 00 3c 00 46 00 4e 00 58 00 60 00 6a 00  
72 00 7c 00 84 00 8e 00 9f 00 a0 00 ac 00 b2 00 ba 00 c4 00 cc 00 d6 00  
de 00 e8 00 f0 00 fa 00 ff ff dd ff c3 ff a7 ff 08 00 12 00 1a 00 24 00  
2c 00 36 00 3e 00 48 00 50 00 5a 00 62 00 6c 00 74 00 7e 00 86 00 90 00  
98 00 a2 00 aa 00 b4 00 bc 00 c6 00 ce 00 d8 00 e0 00 ea 00 f2 00 fc 00  
f3 ff d7 ff bd ff a1 ff 0a 00 14 00 1c 00 26 00 2e 00 38 00 40 00 4a 00  
52 00 5c 00 64 00 6e 00 76 00 80 00 88 00 92 00 9a 00 a4 00 ac 00 b6 00  
be 00 c8 00 d0 00 da 00 e2 00 ec 00 f4 00 fe 00 ed ff d1 ff b7 ff 9b ff  
0c 00 16 00 1e 00 28 00 30 00 3a 00 42 00 4c 00 54 00 5e 00 66 00 70 00  
78 00 82 00 8a 00 94 00 9c 00 a6 00 ae 00 b8 00 c0 00 ca 00 d2 00 dc 00  
e4 00 ee 00 f6 00 00 01 e7 ff cb ff b1 ff 95 ff 0e 00 18 00 20 00 2a 00  
32 00 3c 00 44 00 4e 00 56 00 60 00 68 00 72 00 7a 00 84 00 8c 00 96 00  
9e 00 a8 00 b0 00 ba 00 c2 00 cc 00 d4 00 de 00 e6 00 f0 00 f8 00 fb ff  
e1 ff c5 ff ab ff 8f ff 10 00 1a 00 22 00 2c 00 34 00 3e 00 46 00 50 00  
58 00 62 00 6a 00 74 00 7c 00 86 00 8e 00 98 00 a0 00 aa 00 b2 00 bc 00  
c4 00 ce 00 d6 00 e0 00 e8 00 f2 00 fa 00 f5 ff db ff bf ff a5 ff 89 ff  
12 00 1c 00 24 00 2e 00 36 00 40 00 48 00 52 00 5a 00 64 00 6c 00 76 00  
7e 00 88 00 90 00 9a 00 a2 00 ac 00 b4 00 ba 00 c6 00 d0 00 d8 00 e2 00
```





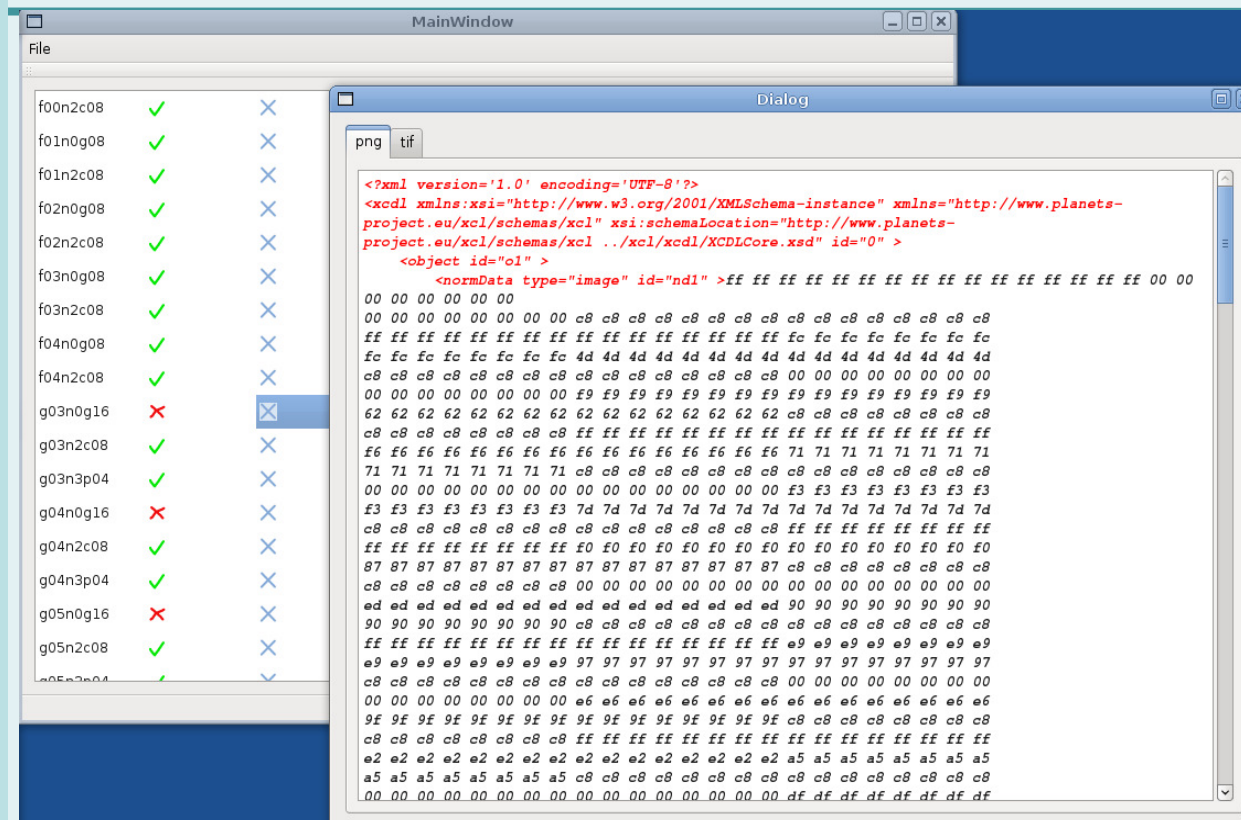
## Evaluation of Results



Jan Schnasse

November 18<sup>th</sup> Bern 

## Evaluation of Results



Jan Schnasse

November 18<sup>th</sup> Bern 

## Evaluation of Results

[illegible]

## Further Information

---

[planetarium.hki.uni-koeln.de](http://planetarium.hki.uni-koeln.de)



Jan Schnasse

November 18<sup>th</sup> Bern The logo for the 'planets' project, consisting of three overlapping blue circles of increasing size to the right of the word 'planets' in a bold, sans-serif font.

# Evaluation of Format Conversion Demo

---

The End!



Jan Schnasse

November 18<sup>th</sup> Bern The logo for the 'planets' project, consisting of three overlapping blue circles of increasing size to the right of the word 'planets' in a bold, lowercase sans-serif font.