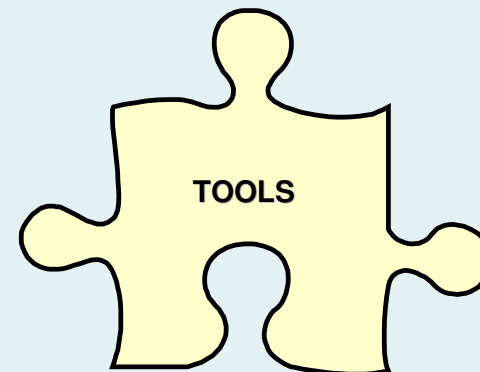
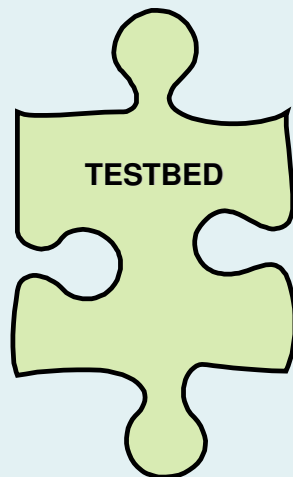
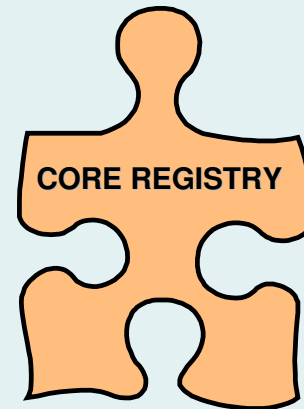
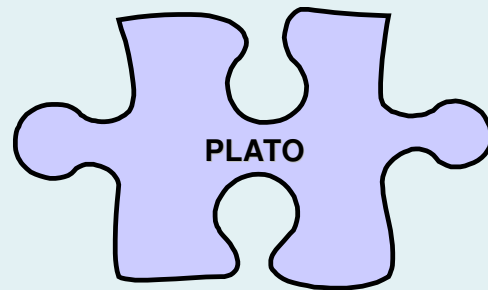




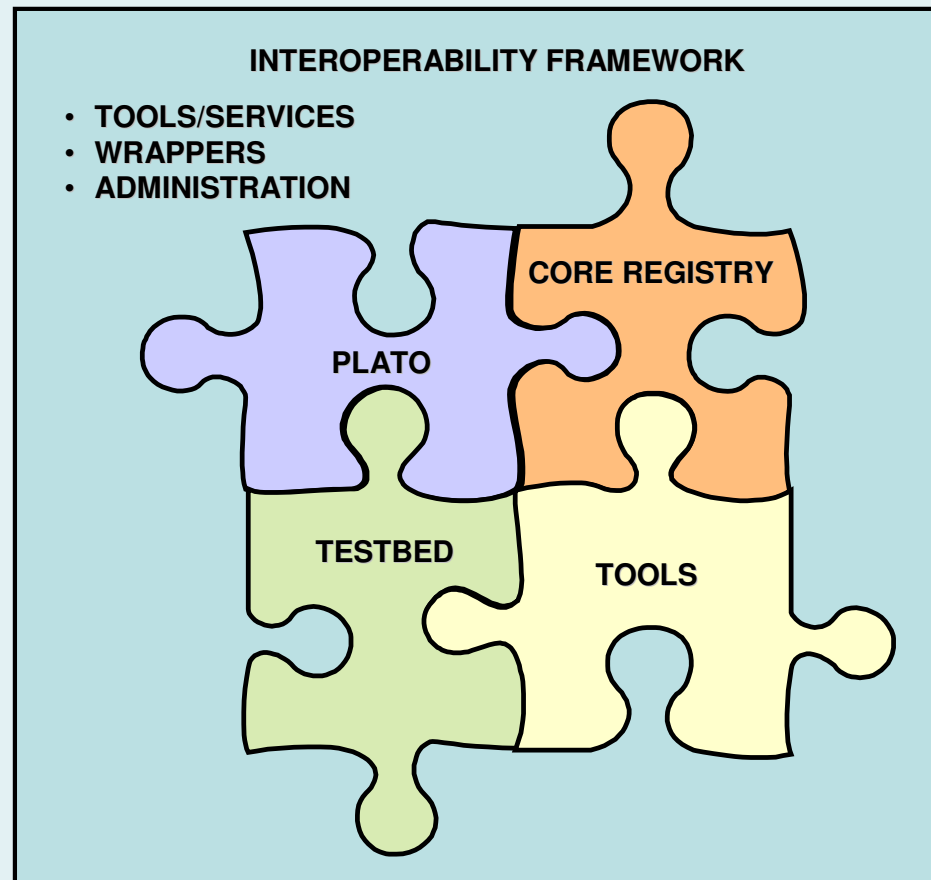
Pulling it all together -
Implementing Digital Preservation using the Planets
Interoperability Framework

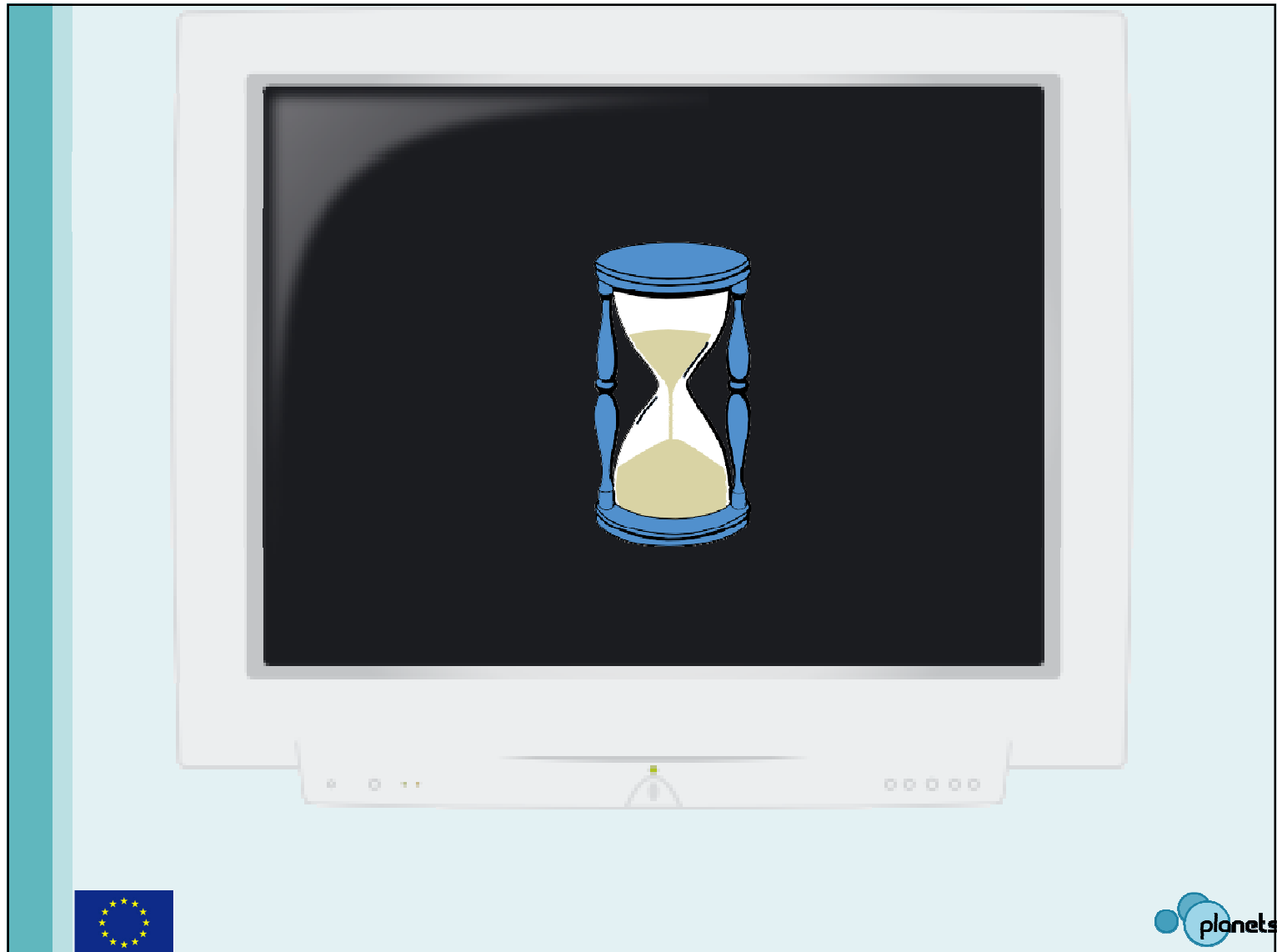
Clive Billenness – Planets Programme Manager

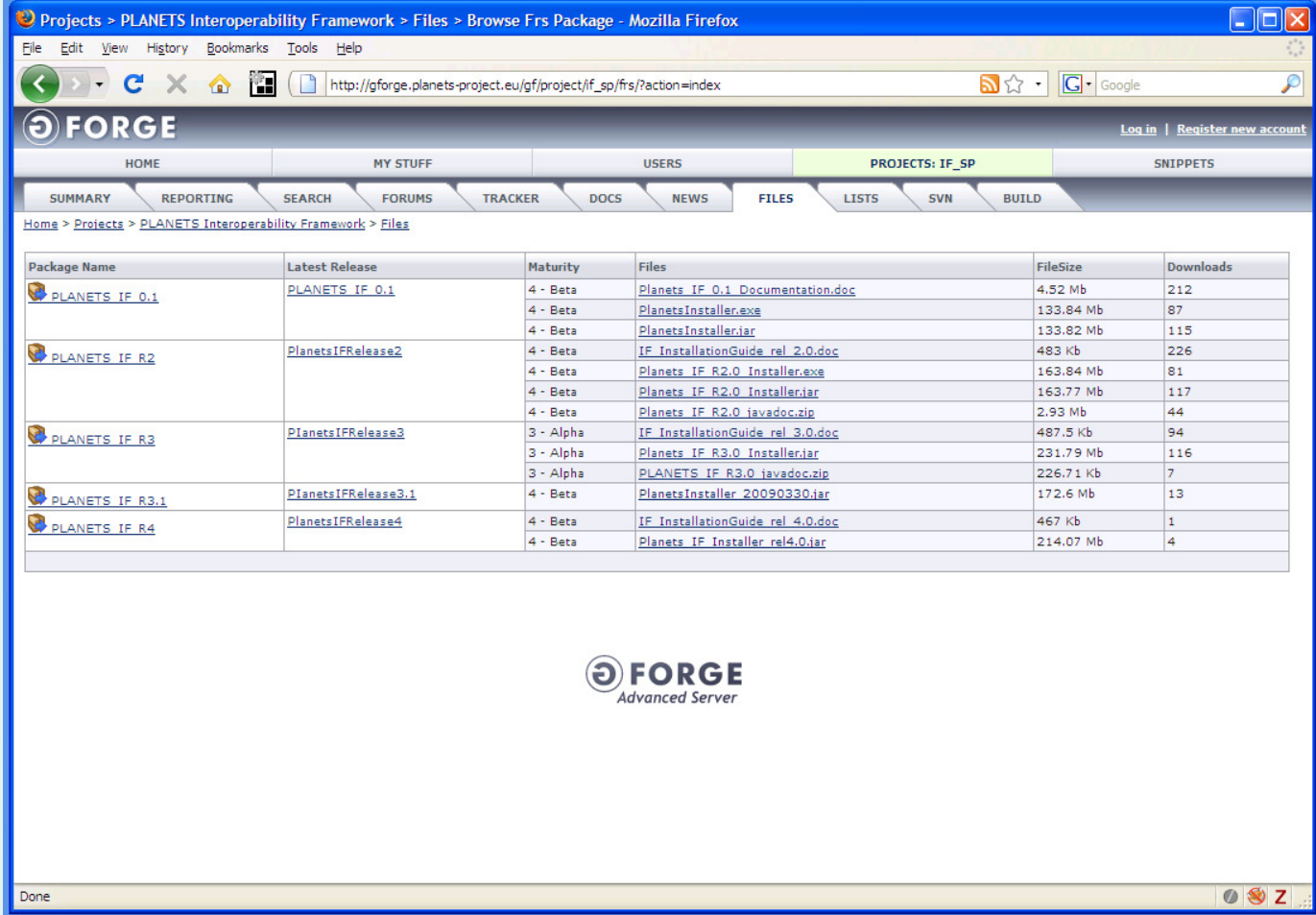
Assembling the Jigsaw



Assembling the Jigsaw







The screenshot shows a web browser window displaying the Forge Advanced Server interface. The browser's address bar shows the URL http://gforge.planets-project.eu/gf/project/lf_sp/frs/?action=index. The page title is "Projects > PLANETS Interoperability Framework > Files > Browse Frs Package - Mozilla Firefox".

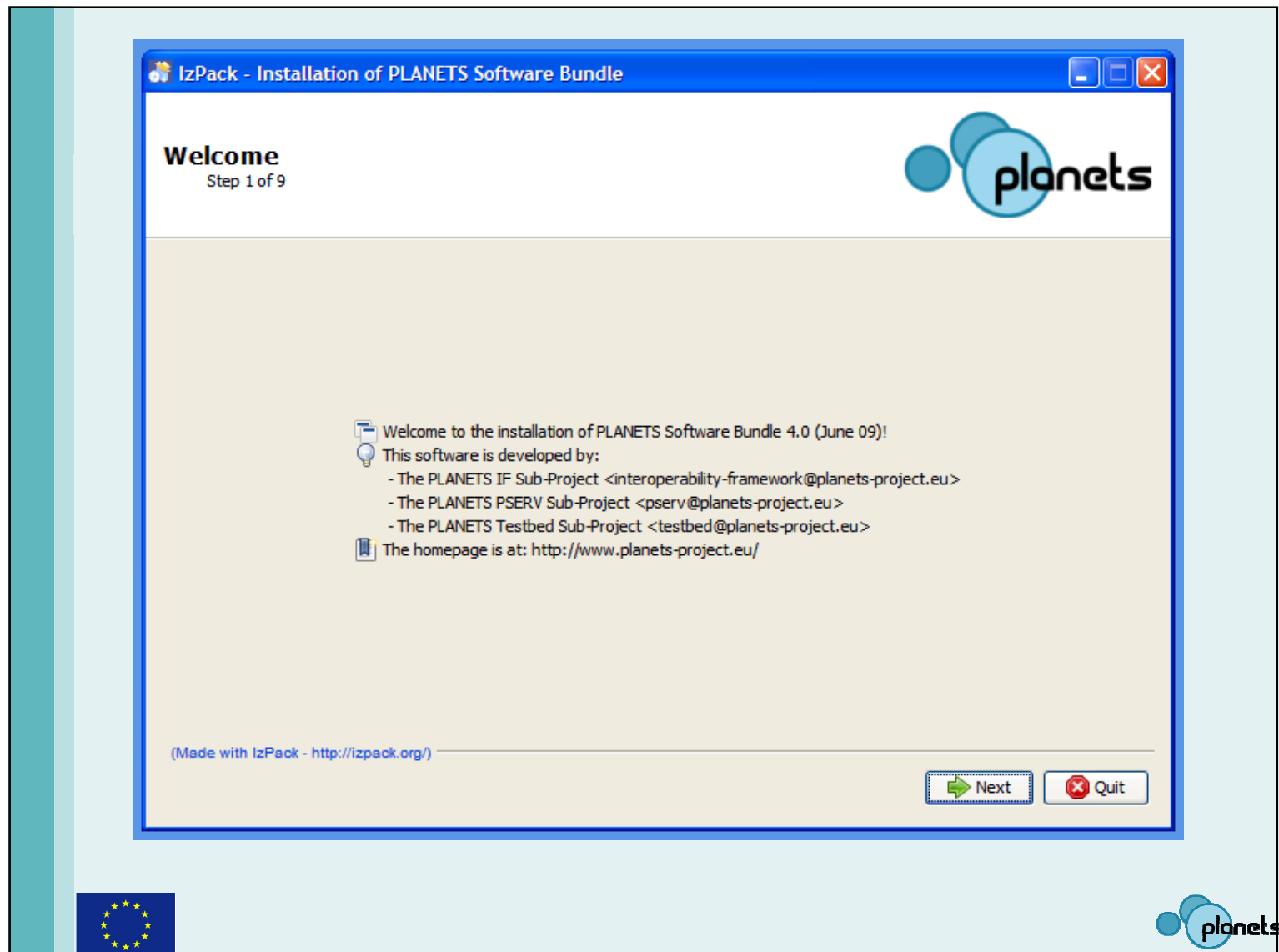
The Forge logo is prominently displayed at the top left of the page content. Below the logo, there is a navigation bar with tabs: HOME, MY STUFF, USERS, PROJECTS: IF_SP (selected), and SNIPPETS. Under the PROJECTS: IF_SP tab, there are sub-tabs: SUMMARY, REPORTING, SEARCH, FORUMS, TRACKER, DOCS, NEWS, FILES (selected), LISTS, SVN, and BUILD.

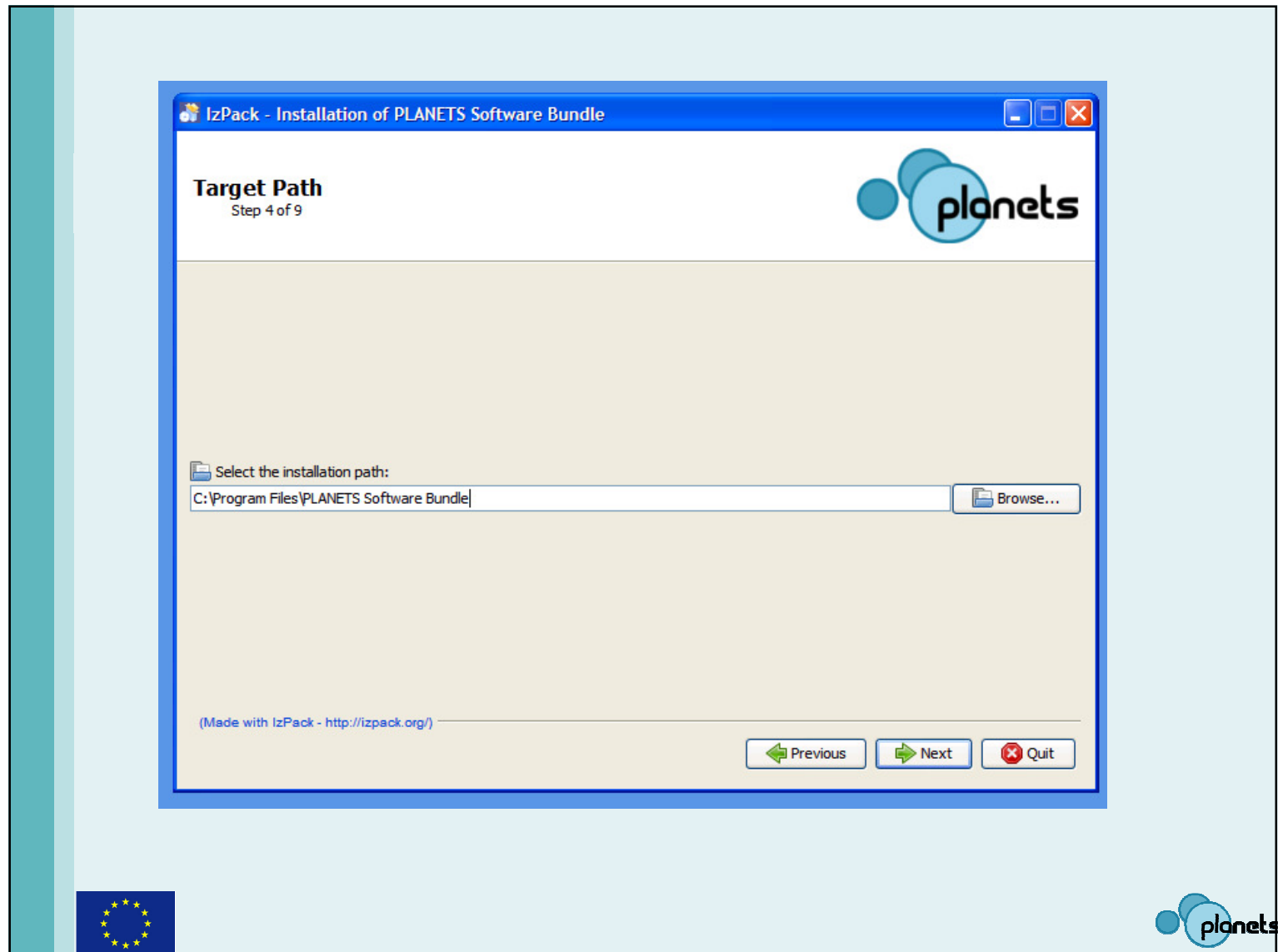
The main content area displays a table of files for the PLANETS Interoperability Framework. The table has columns for Package Name, Latest Release, Maturity, Files, FileSize, and Downloads.

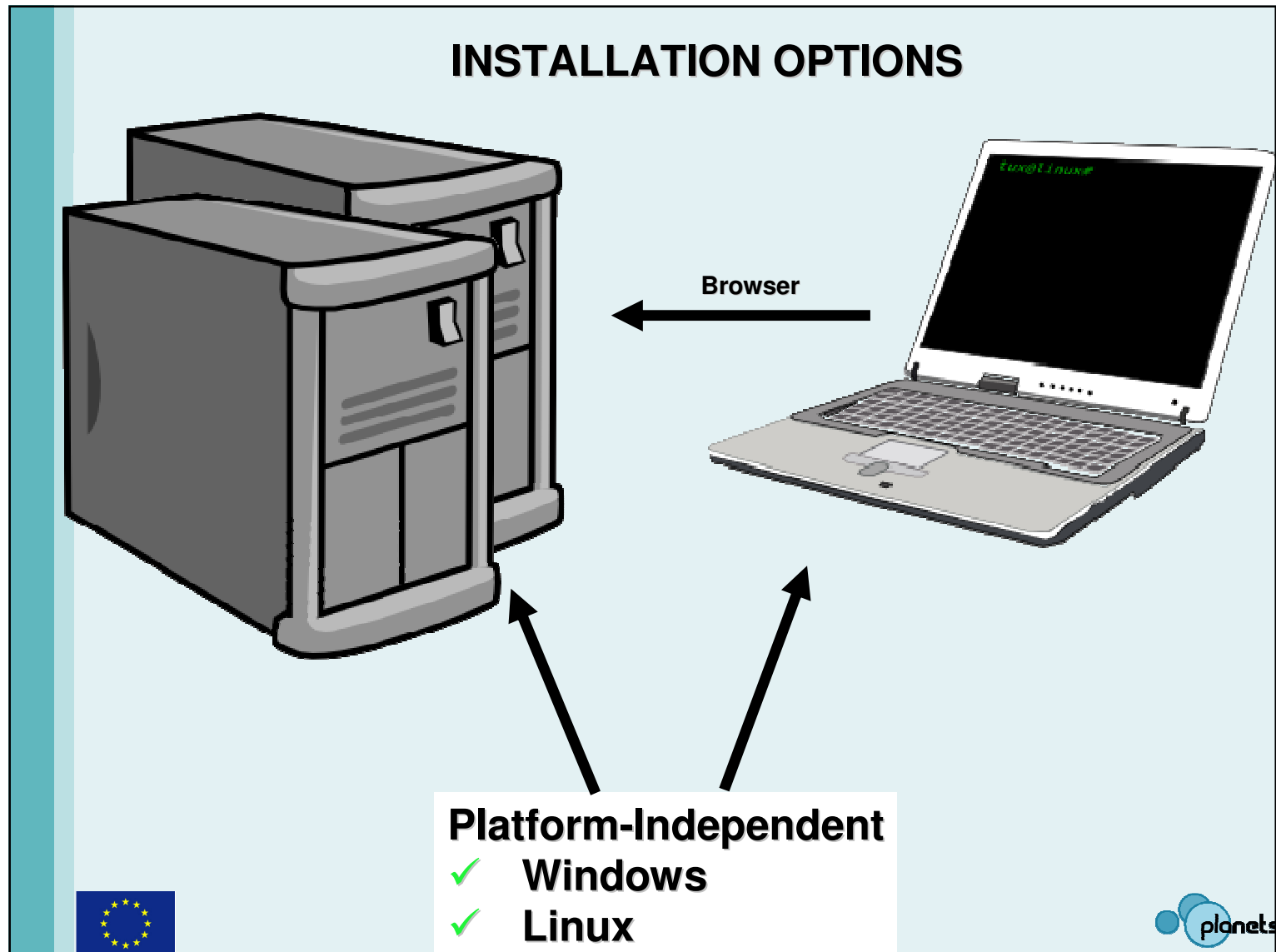
Package Name	Latest Release	Maturity	Files	FileSize	Downloads
PLANETS IF 0.1	PLANETS IF 0.1	4 - Beta	Planets IF 0.1 Documentation.doc	4.52 Mb	212
		4 - Beta	PlanetsInstaller.exe	133.84 Mb	87
		4 - Beta	PlanetsInstaller.jar	133.82 Mb	115
PLANETS IF R2	PlanetsIFRelease2	4 - Beta	IF InstallationGuide_rel_2.0.doc	483 Kb	226
		4 - Beta	Planets IF R2.0 Installer.exe	163.84 Mb	81
		4 - Beta	Planets IF R2.0 Installer.jar	163.77 Mb	117
		4 - Beta	Planets IF R2.0 javadoc.zip	2.93 Mb	44
PLANETS IF R3	PlanetsIFRelease3	3 - Alpha	IF InstallationGuide_rel_3.0.doc	487.5 Kb	94
		3 - Alpha	Planets IF R3.0 Installer.jar	231.79 Mb	116
		3 - Alpha	PLANETS IF R3.0 javadoc.zip	226.71 Kb	7
PLANETS IF R3.1	PlanetsIFRelease3.1	4 - Beta	PlanetsInstaller_20090330.jar	172.6 Mb	13
PLANETS IF R4	PlanetsIFRelease4	4 - Beta	IF InstallationGuide_rel_4.0.doc	467 Kb	1
		4 - Beta	Planets IF Installer_rel4.0.jar	214.07 Mb	4

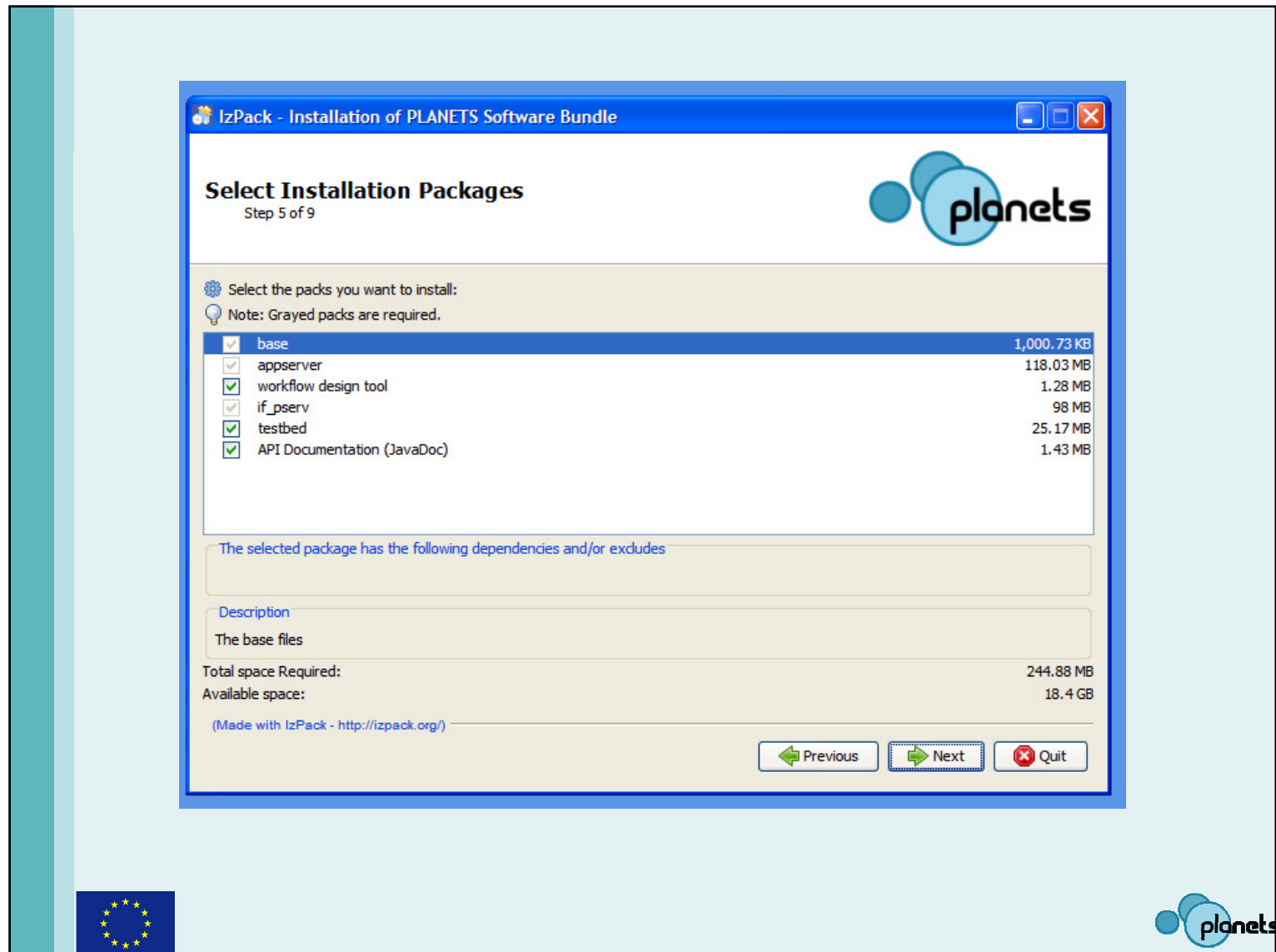
At the bottom of the page, the Forge Advanced Server logo is displayed. The browser window shows a "Done" status at the bottom left and a taskbar with a "Z" icon at the bottom right.

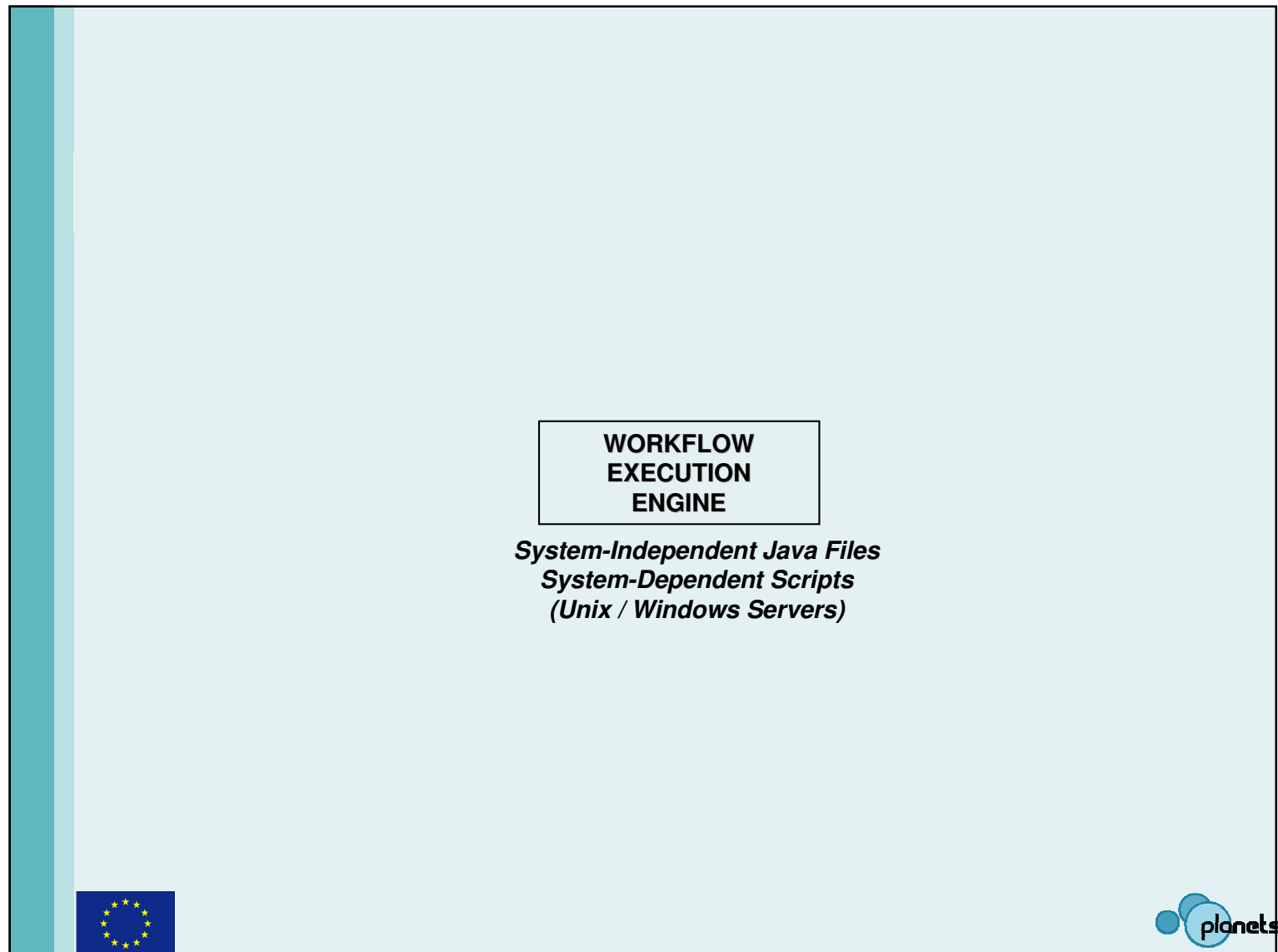


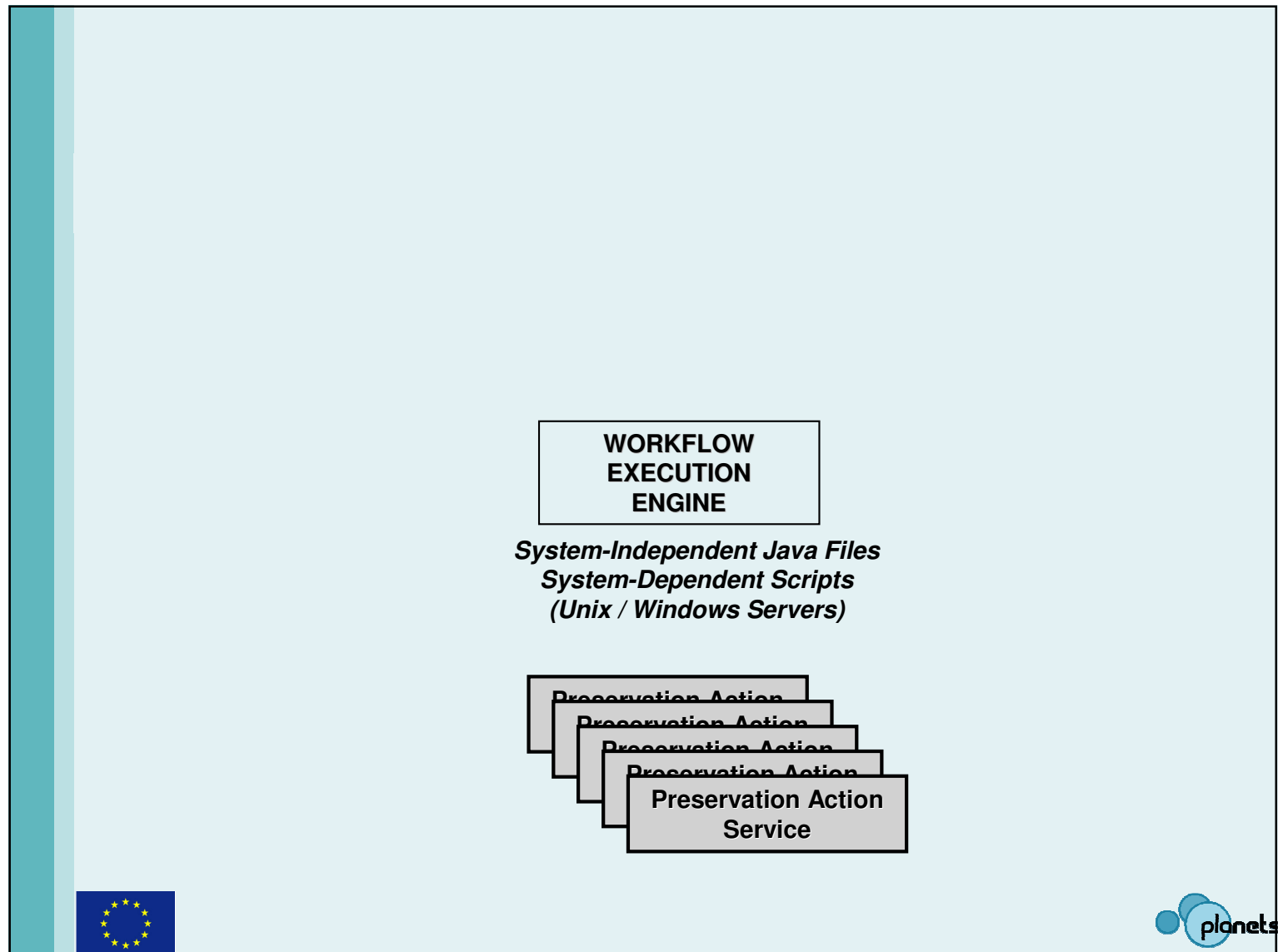


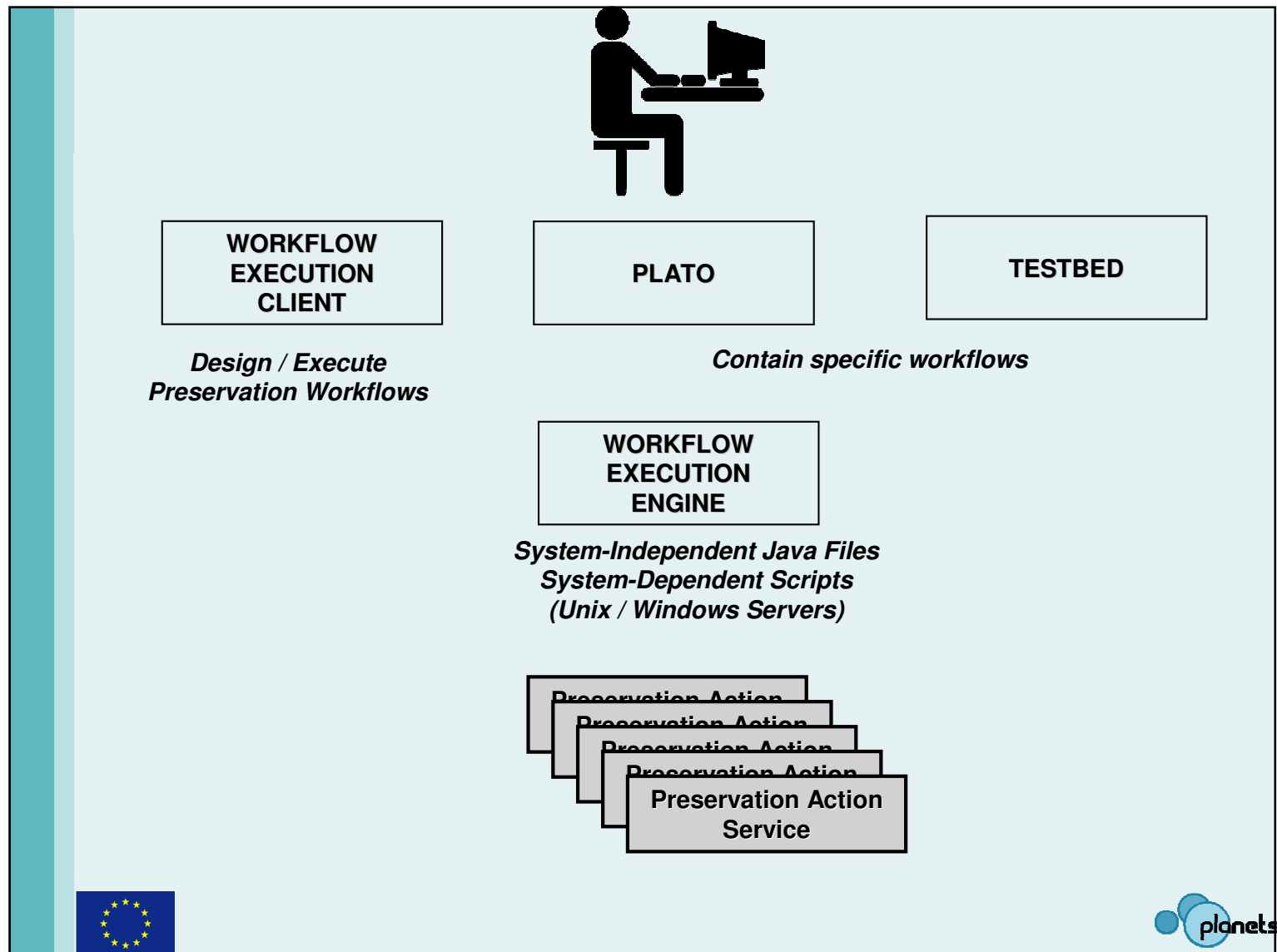


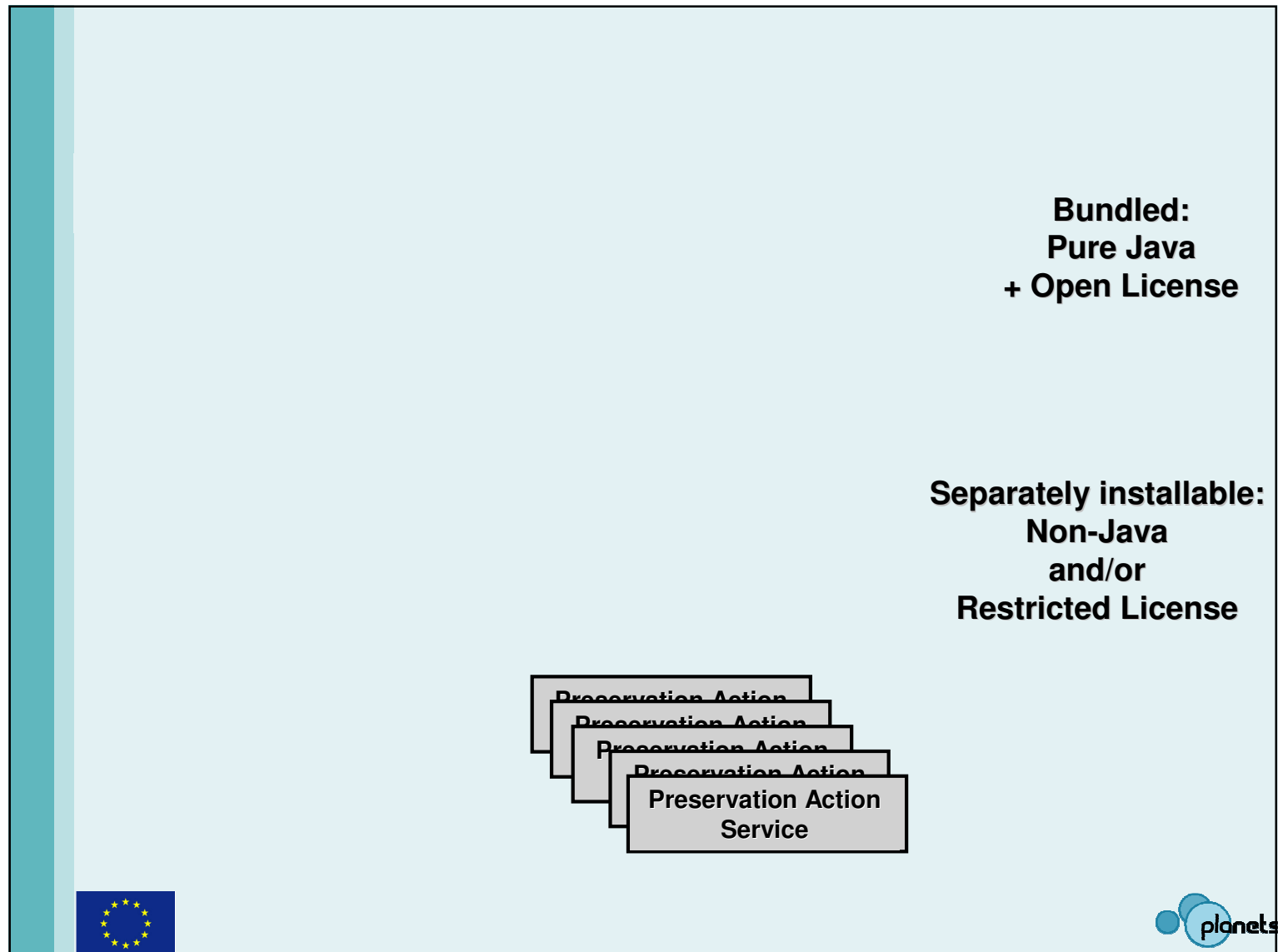


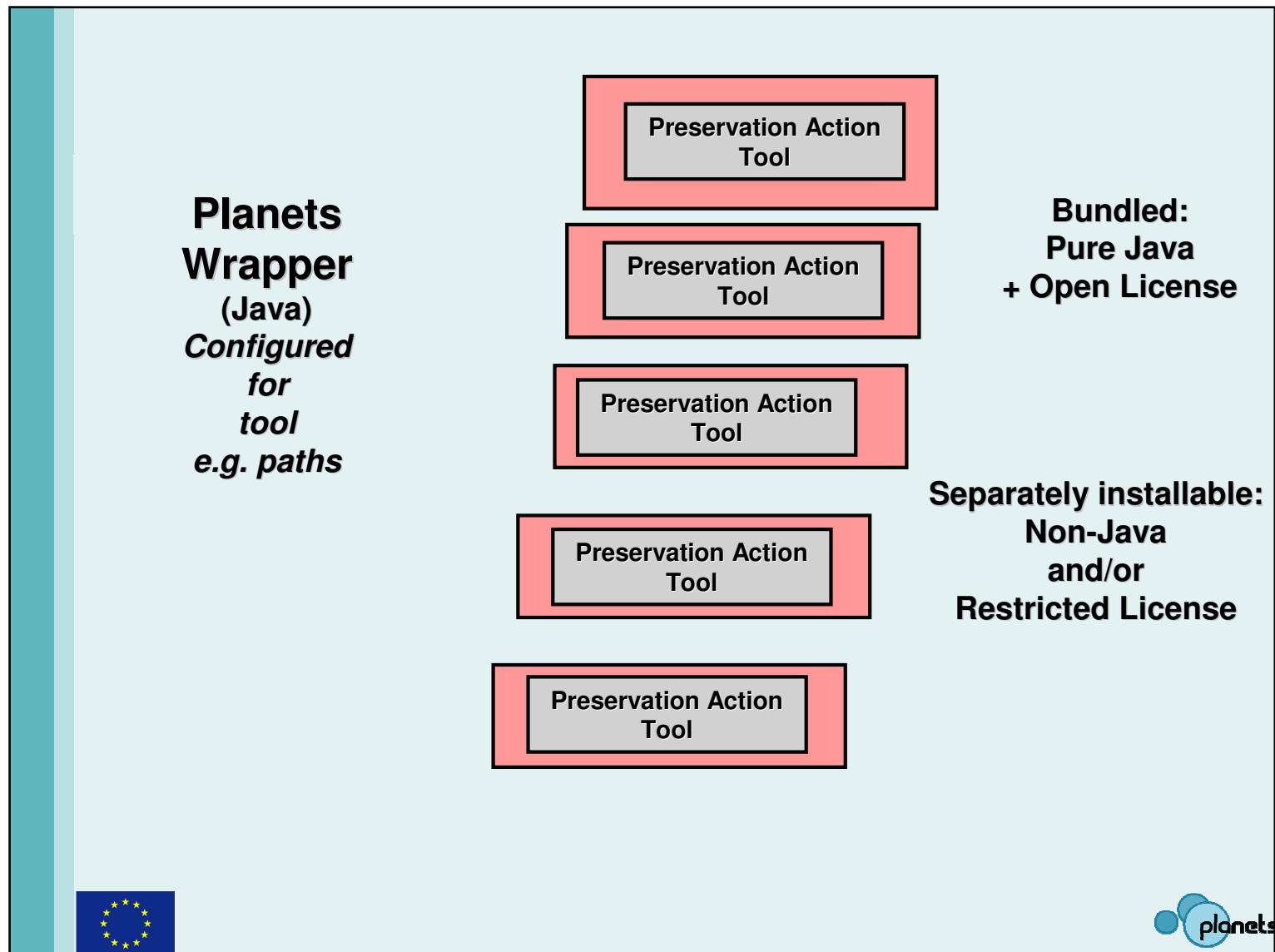


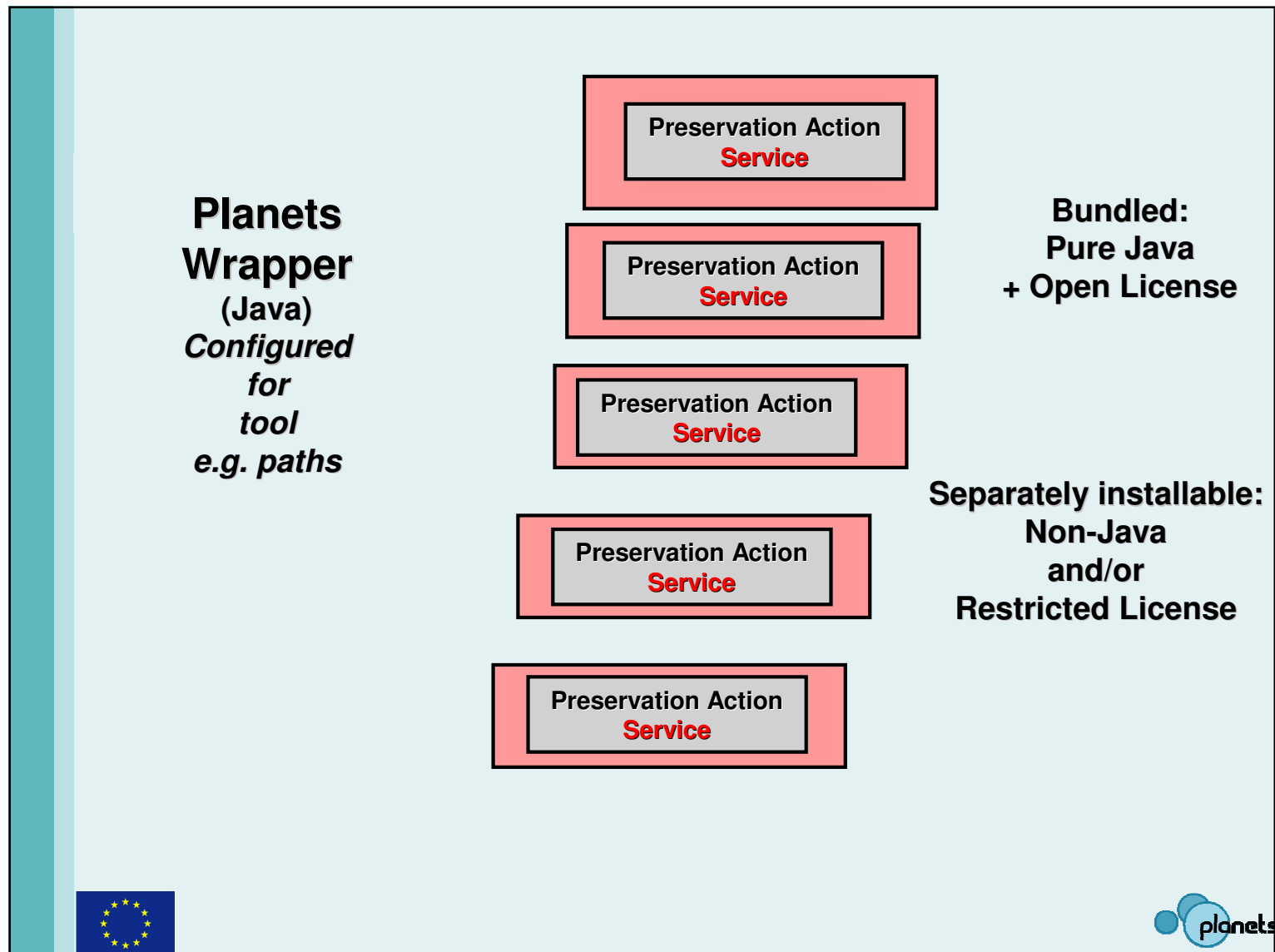


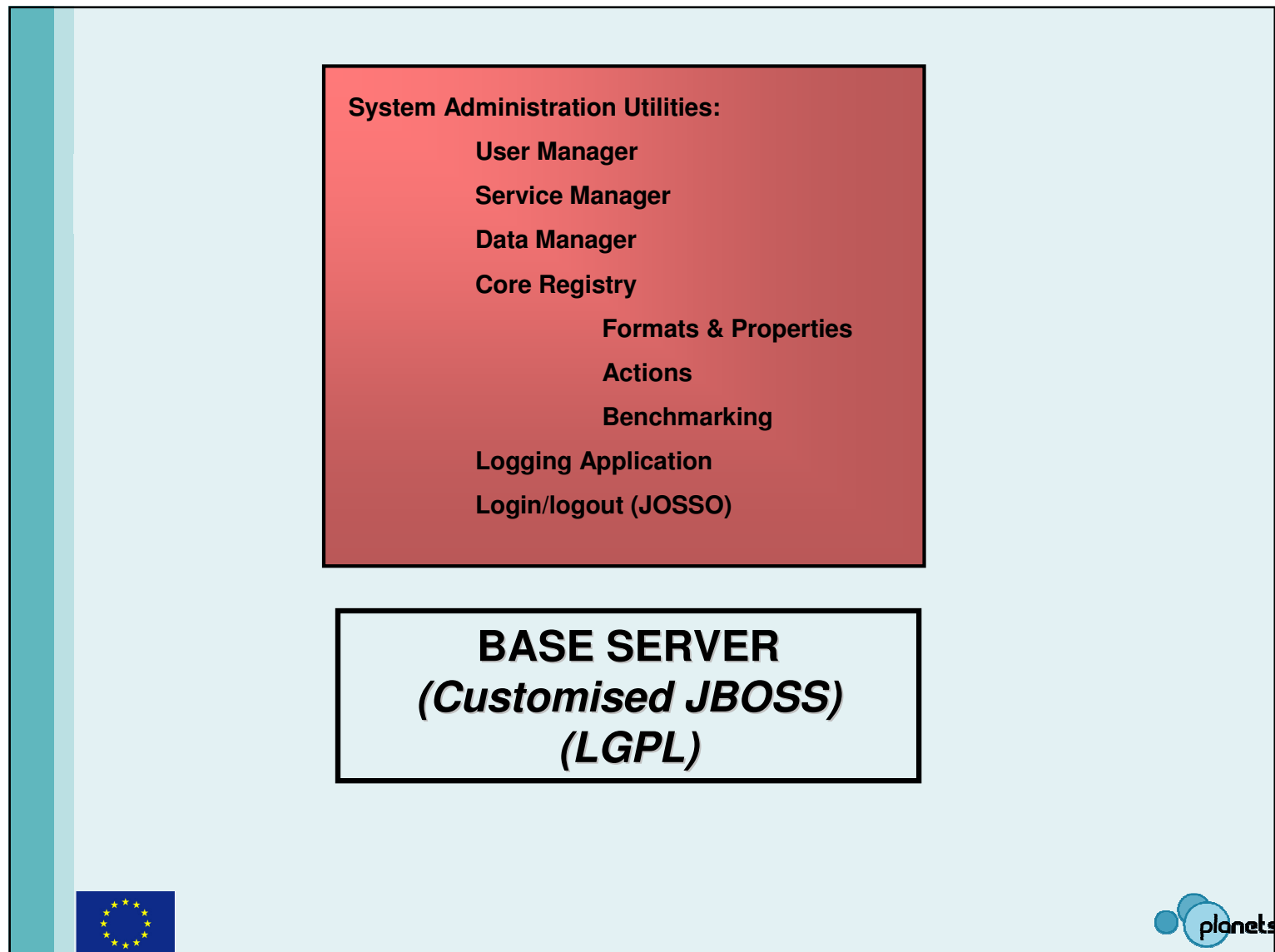


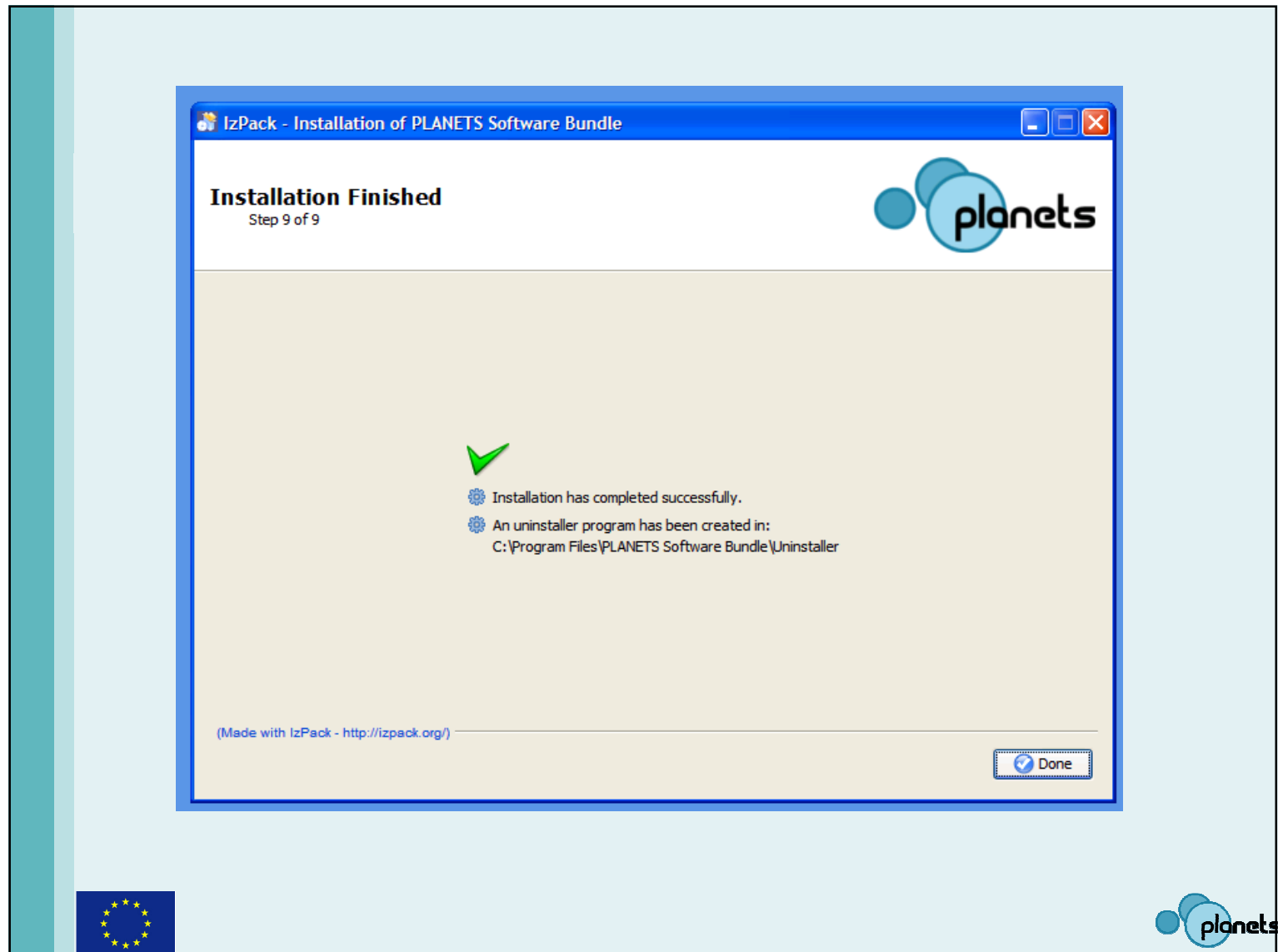










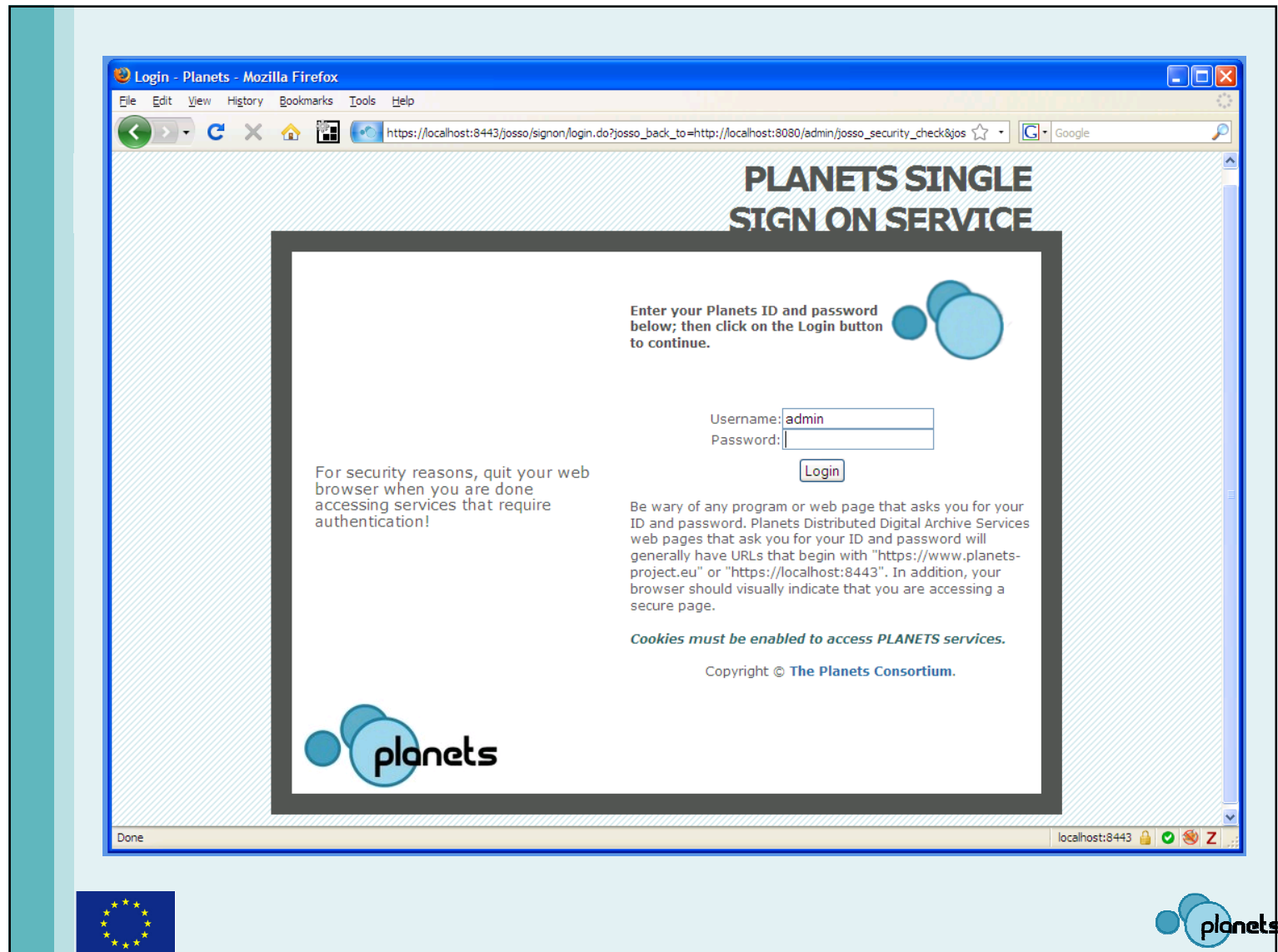


Putting it all together

- ❑ Planets can be installed on workstations or servers
- ❑ Installation package from Planets provides:
 - Its own software
 - The underlying utilities and server engines required to run it
 - An initial selection of preservation tools
 - Comes with some preconfigured user accounts
- ❑ Initiate the JBOSS engine (Command Line Interface)
- ❑ Connect to use Planets

URL: <http://localhost:8080>







Questions

