

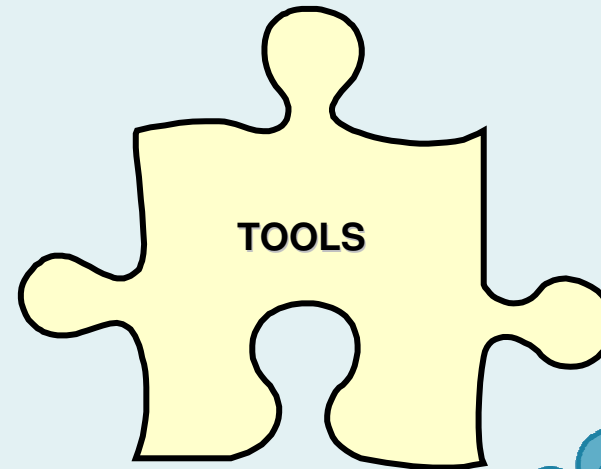
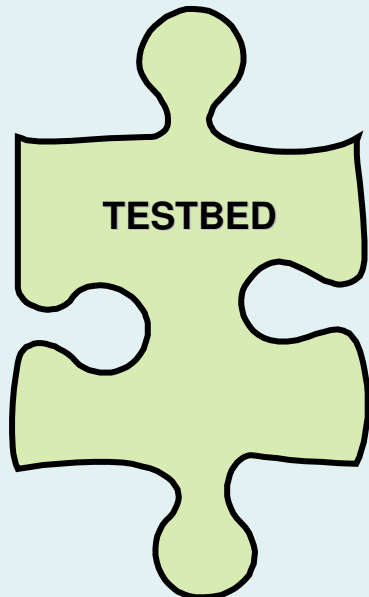
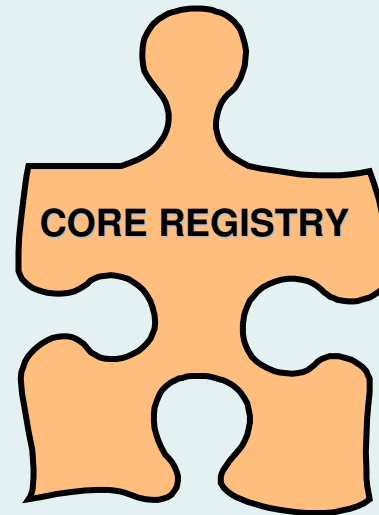
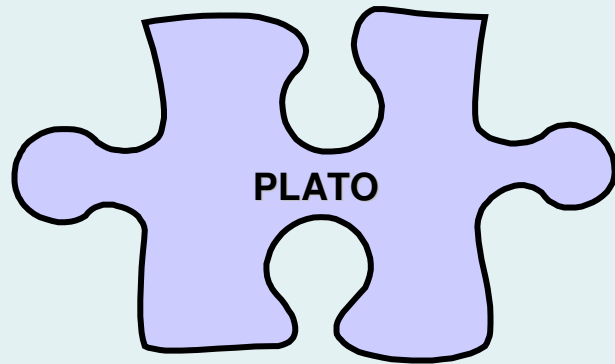


Pulling it all together -  
Implementing Digital Preservation using the Planets  
Interoperability Framework

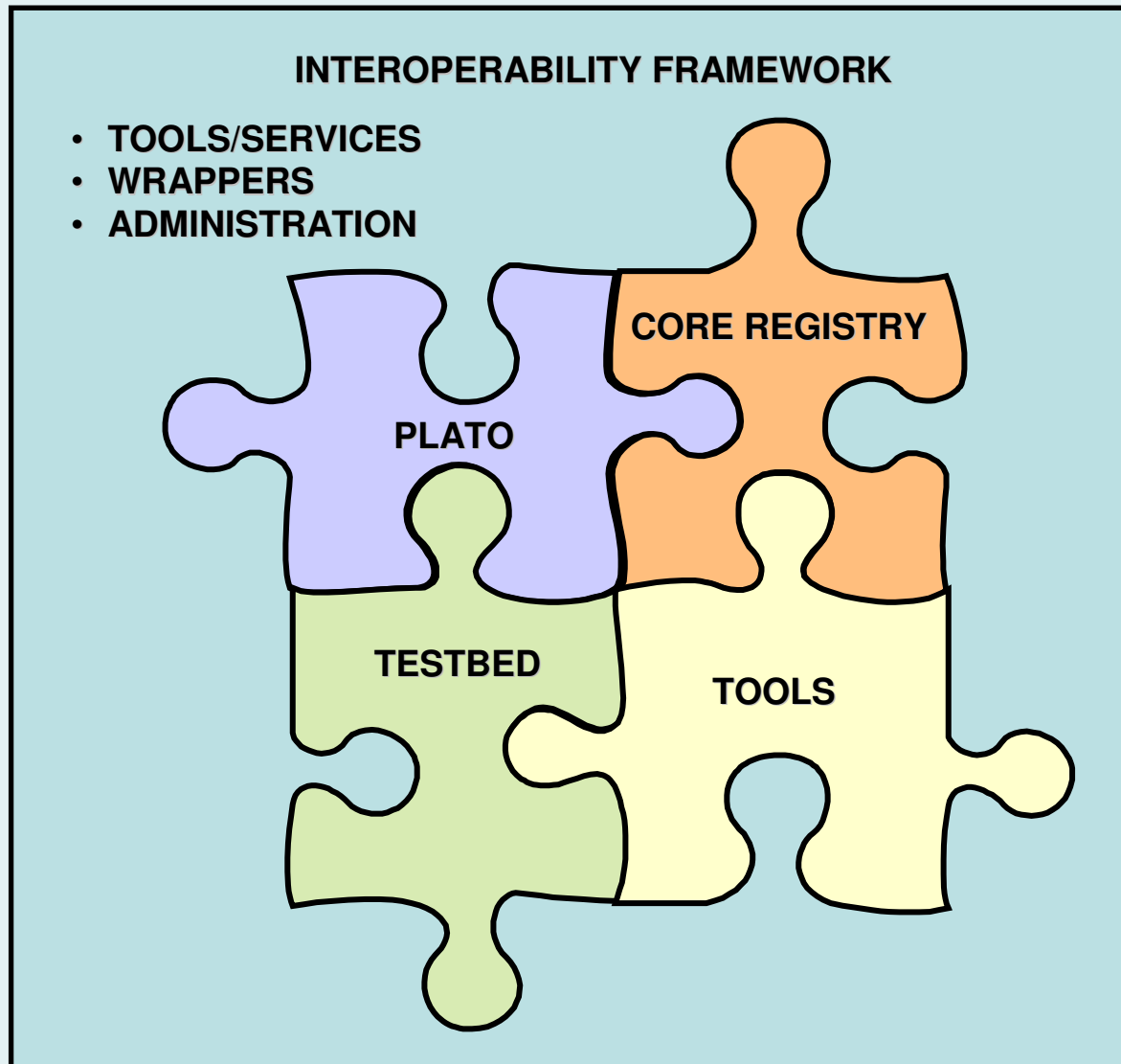
Clive Billenness – Planets Programme Manager

# Assembling the Jigsaw

---



# Assembling the Jigsaw





Projects > PLANETS Interoperability Framework > Files > Browse Frs Package - Mozilla Firefox

File Edit View History Bookmarks Tools Help






http://gforge.planets-project.eu/gf/project/if\_sp/frs/?action=index


Log in | Register new account

HOME MY STUFF USERS PROJECTS: IF\_SP SNIPPETS

SUMMARY REPORTING SEARCH FORUMS TRACKER DOCS NEWS FILES LISTS SVN BUILD

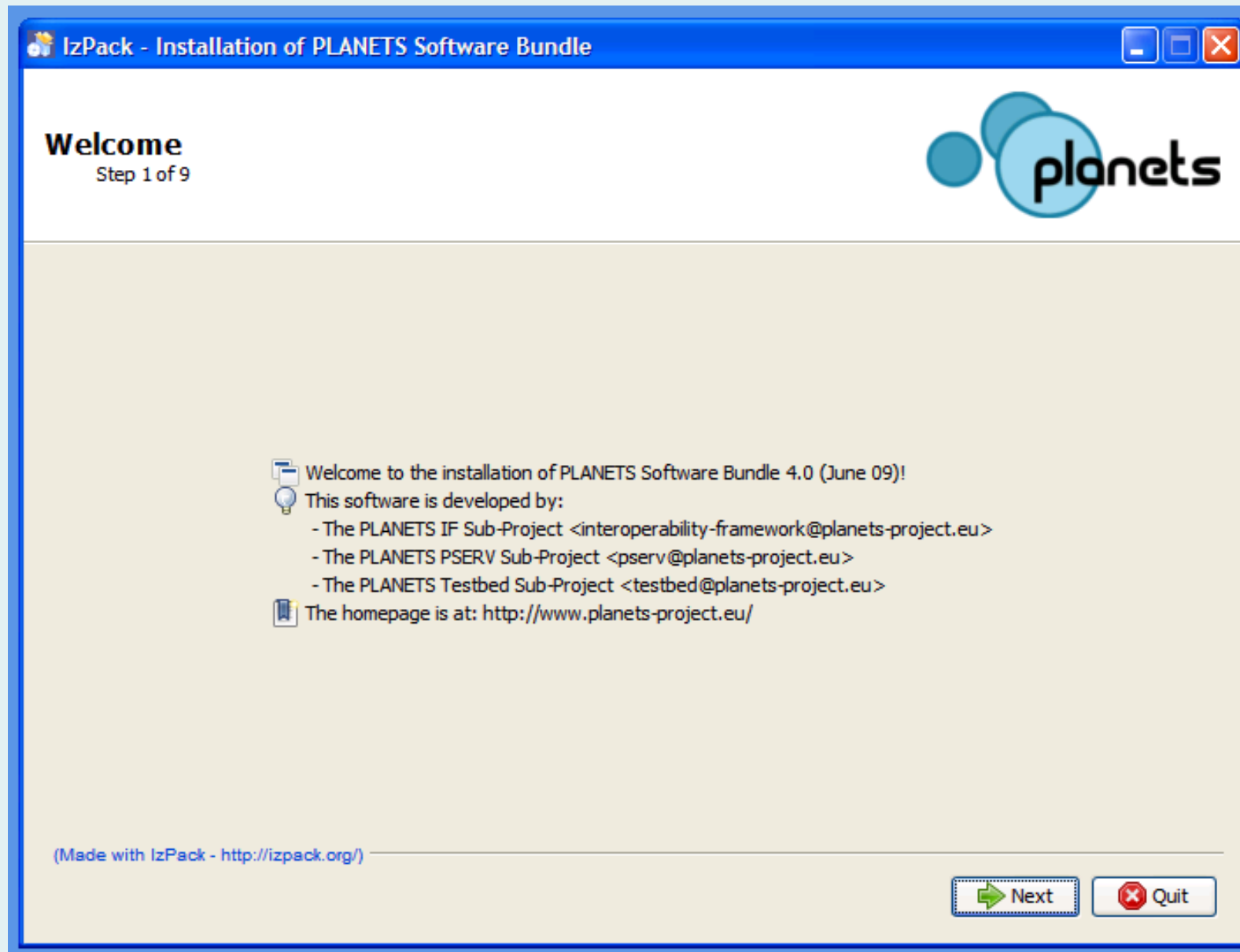
Home > Projects > PLANETS Interoperability Framework > Files

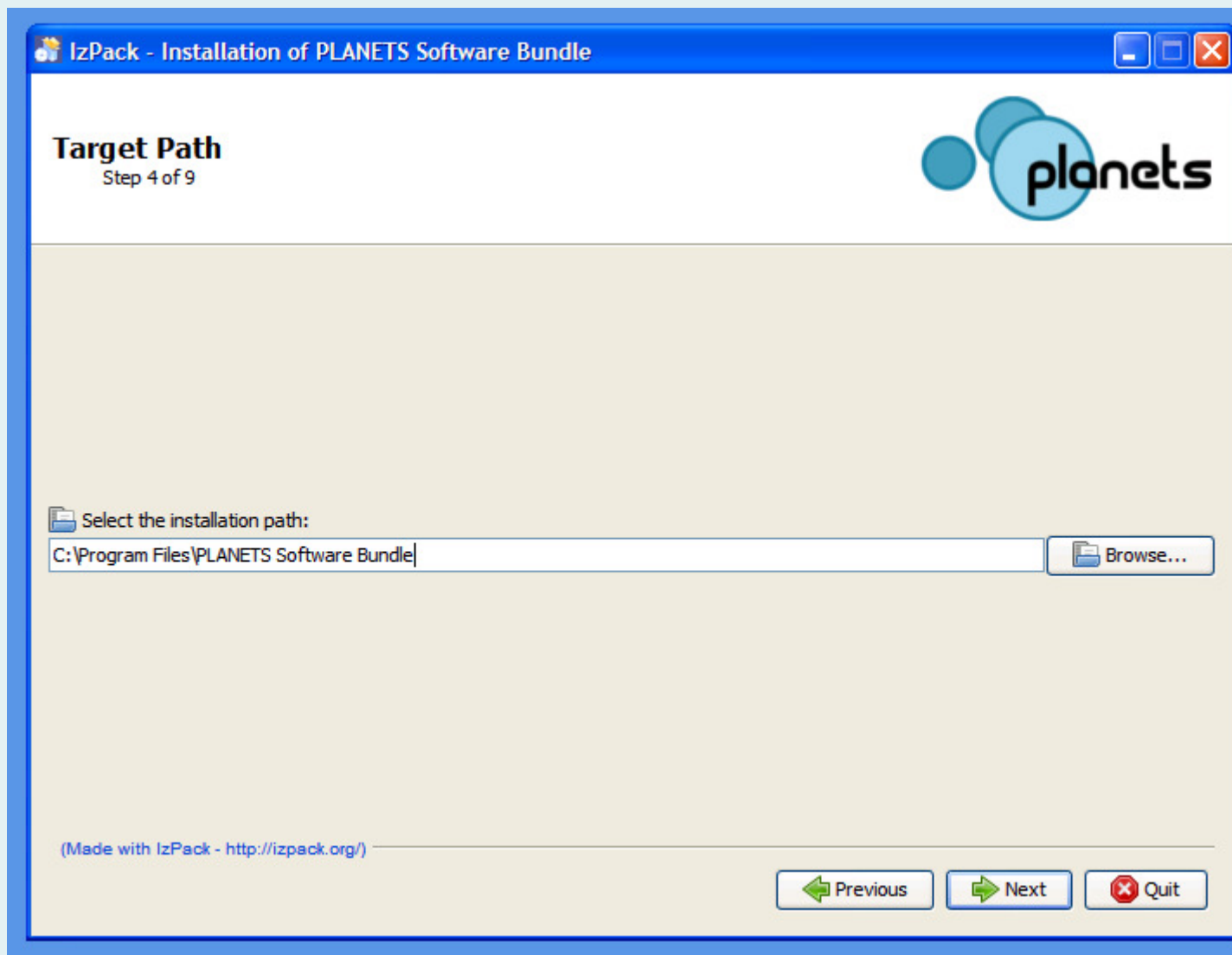
Package Name	Latest Release	Maturity	Files	FileSize	Downloads
 <a href="#">PLANETS IF 0.1</a>	<a href="#">PLANETS IF 0.1</a>	4 - Beta	<a href="#">Planets IF 0.1 Documentation.doc</a>	4.52 Mb	212
		4 - Beta	<a href="#">PlanetsInstaller.exe</a>	133.84 Mb	87
		4 - Beta	<a href="#">PlanetsInstaller.jar</a>	133.82 Mb	115
 <a href="#">PLANETS IF R2</a>	<a href="#">PlanetsIFRelease2</a>	4 - Beta	<a href="#">IF InstallationGuide rel 2.0.doc</a>	483 Kb	226
		4 - Beta	<a href="#">Planets IF R2.0 Installer.exe</a>	163.84 Mb	81
		4 - Beta	<a href="#">Planets IF R2.0 Installer.jar</a>	163.77 Mb	117
		4 - Beta	<a href="#">Planets IF R2.0 javadoc.zip</a>	2.93 Mb	44
 <a href="#">PLANETS IF R3</a>	<a href="#">PlanetsIFRelease3</a>	3 - Alpha	<a href="#">IF InstallationGuide rel 3.0.doc</a>	487.5 Kb	94
		3 - Alpha	<a href="#">Planets IF R3.0 Installer.jar</a>	231.79 Mb	116
		3 - Alpha	<a href="#">PLANETS IF R3.0 javadoc.zip</a>	226.71 Kb	7
 <a href="#">PLANETS IF R3.1</a>	<a href="#">PlanetsIFRelease3.1</a>	4 - Beta	<a href="#">PlanetsInstaller 20090330.jar</a>	172.6 Mb	13
 <a href="#">PLANETS IF R4</a>	<a href="#">PlanetsIFRelease4</a>	4 - Beta	<a href="#">IF InstallationGuide rel 4.0.doc</a>	467 Kb	1
		4 - Beta	<a href="#">Planets IF Installer rel4.0.jar</a>	214.07 Mb	4

 **FORGE**  
Advanced Server

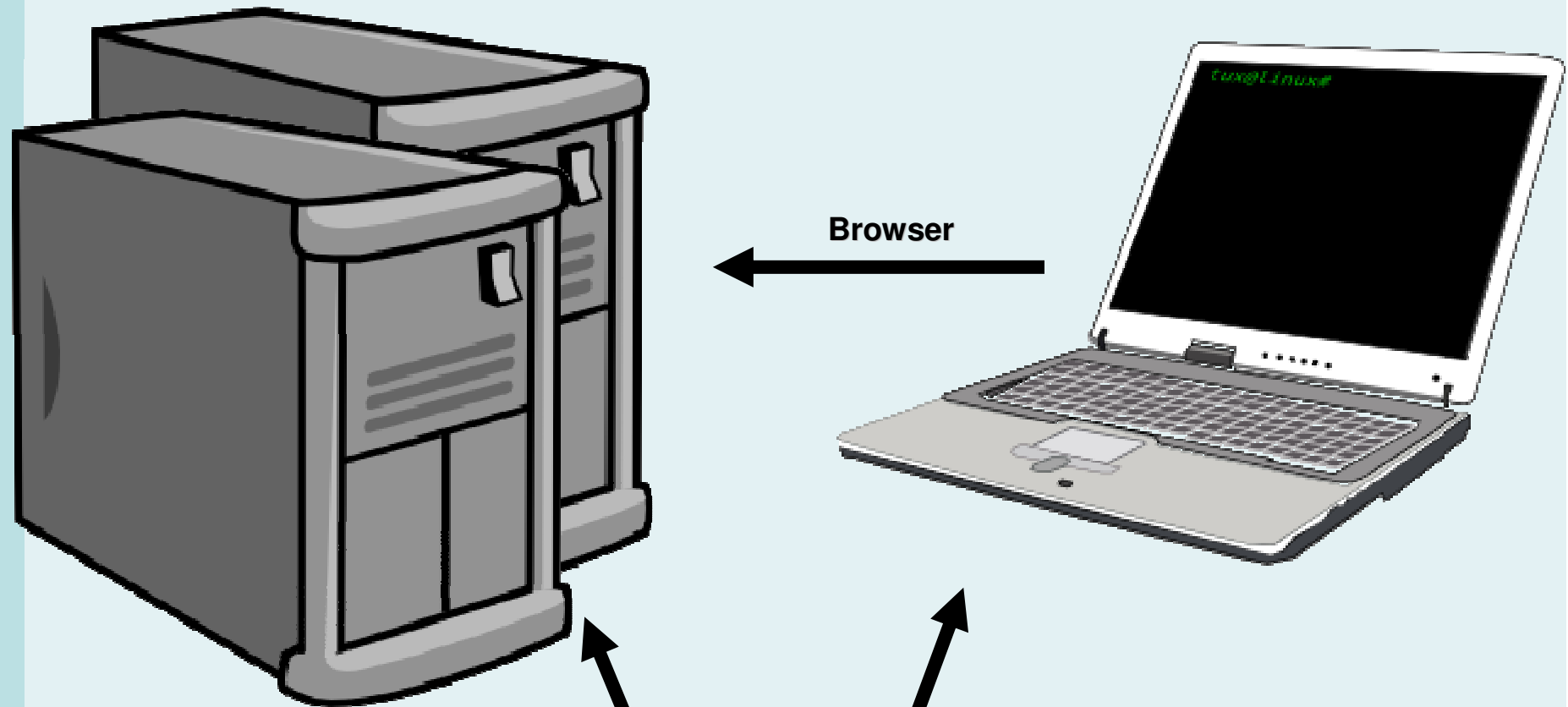
Done







# INSTALLATION OPTIONS

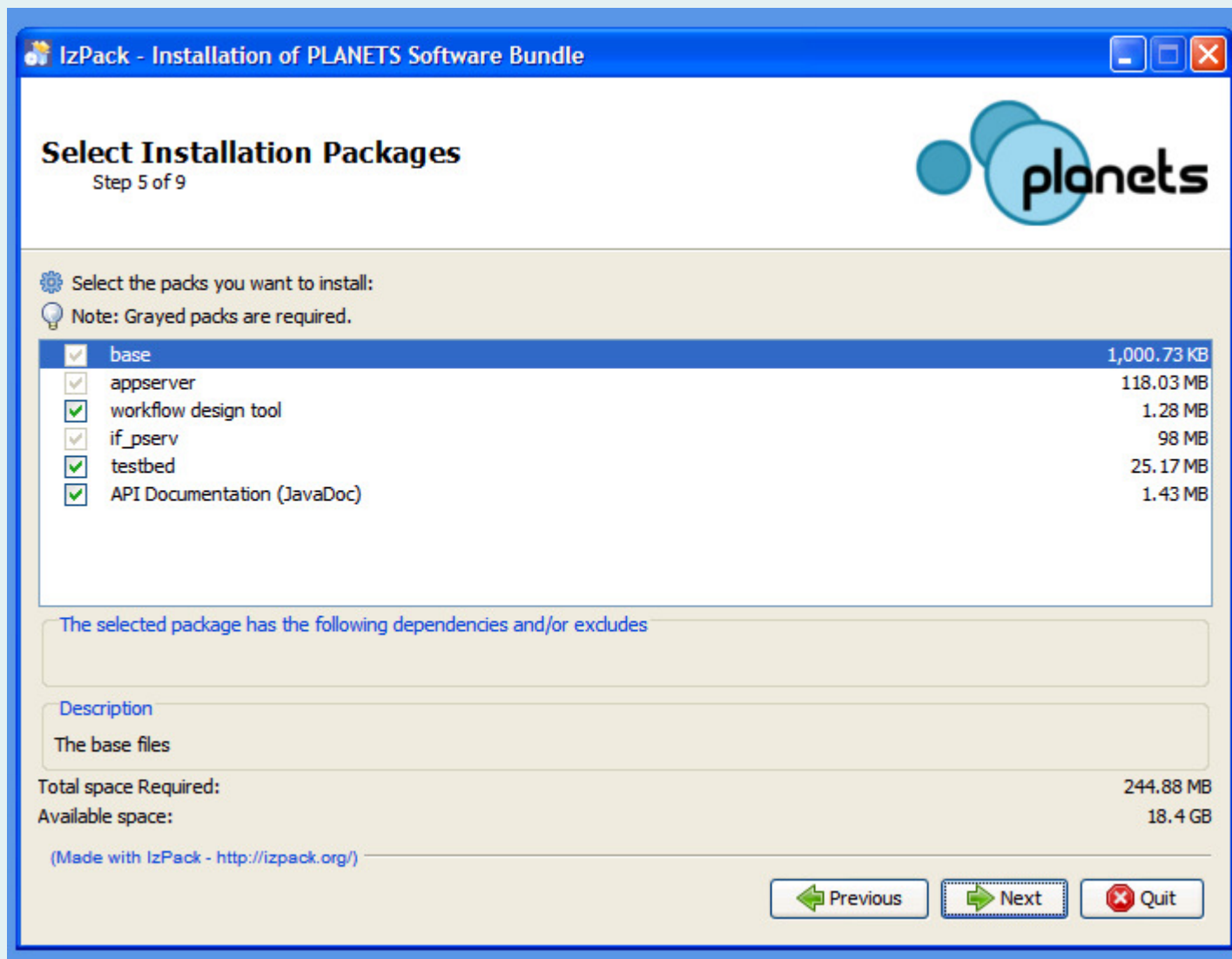


**Platform-Independent**

- ✓ Windows
- ✓ Linux







**WORKFLOW  
EXECUTION  
ENGINE**

***System-Independent Java Files  
System-Dependent Scripts  
(Unix / Windows Servers)***



**WORKFLOW  
EXECUTION  
ENGINE**

***System-Independent Java Files  
System-Dependent Scripts  
(Unix / Windows Servers)***





**WORKFLOW  
EXECUTION  
CLIENT**

*Design / Execute  
Preservation Workflows*

**PLATO**

*Contain specific workflows*

**TESTBED**

**WORKFLOW  
EXECUTION  
ENGINE**

*System-Independent Java Files  
System-Dependent Scripts  
(Unix / Windows Servers)*

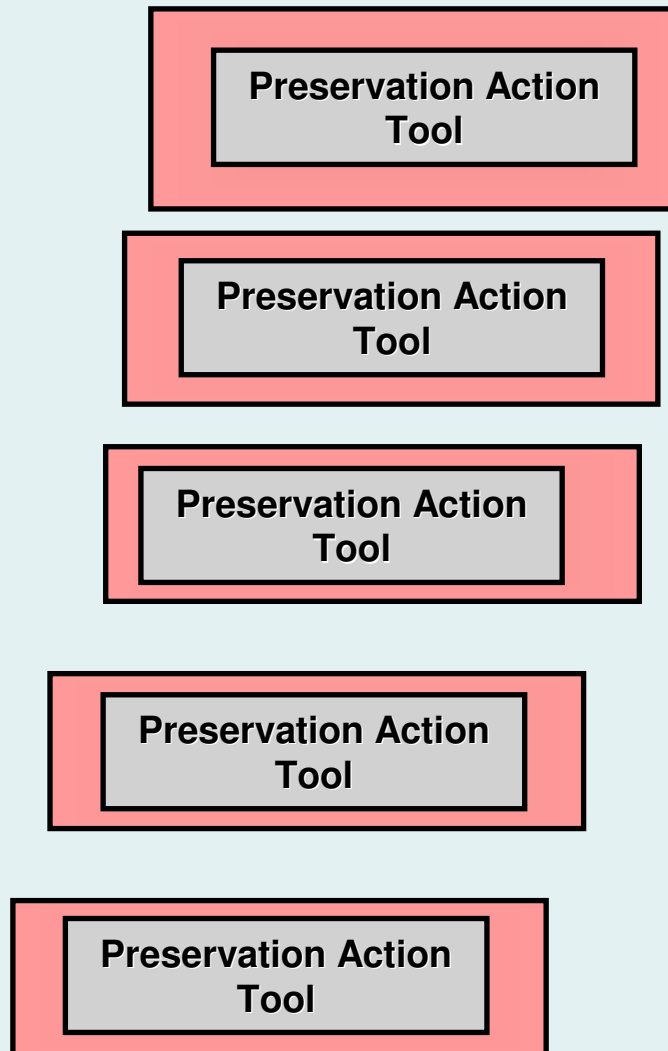


**Bundled:  
Pure Java  
+ Open License**

**Separately installable:  
Non-Java  
and/or  
Restricted License**



**Planets  
Wrapper  
(Java)**  
*Configured  
for  
tool  
e.g. paths*

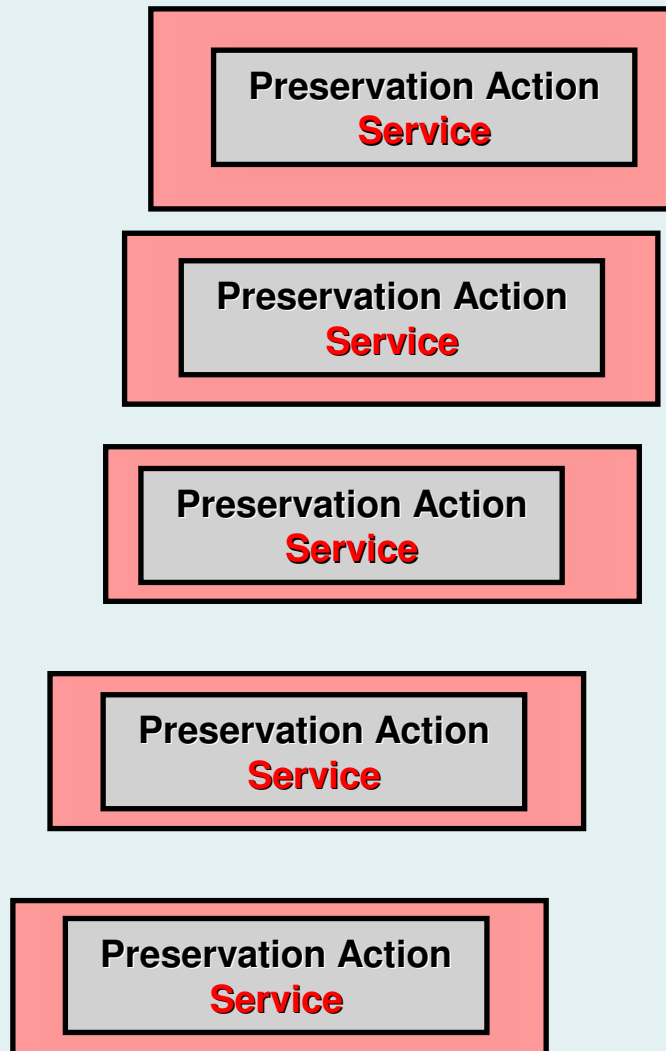


**Bundled:  
Pure Java  
+ Open License**

**Separately installable:  
Non-Java  
and/or  
Restricted License**



**Planets  
Wrapper**  
(Java)  
*Configured  
for  
tool  
e.g. paths*



**Bundled:  
Pure Java  
+ Open License**

**Separately installable:  
Non-Java  
and/or  
Restricted License**



**System Administration Utilities:**

**User Manager**

**Service Manager**

**Data Manager**

**Core Registry**

**Formats & Properties**

**Actions**

**Benchmarking**

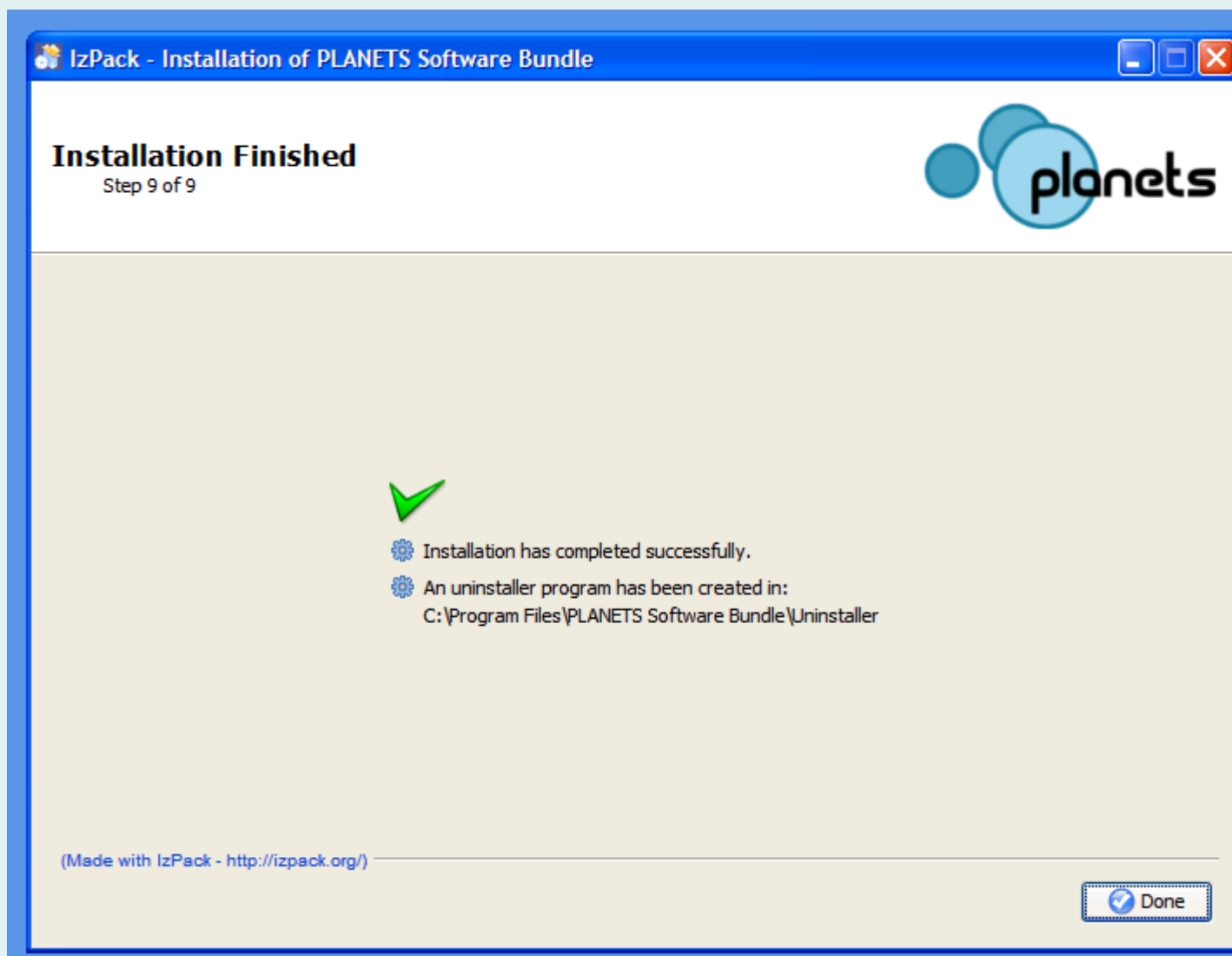
**Logging Application**

**Login/logout (JOSSO)**

**BASE SERVER**  
***(Customised JBOSS)***  
***(LGPL)***







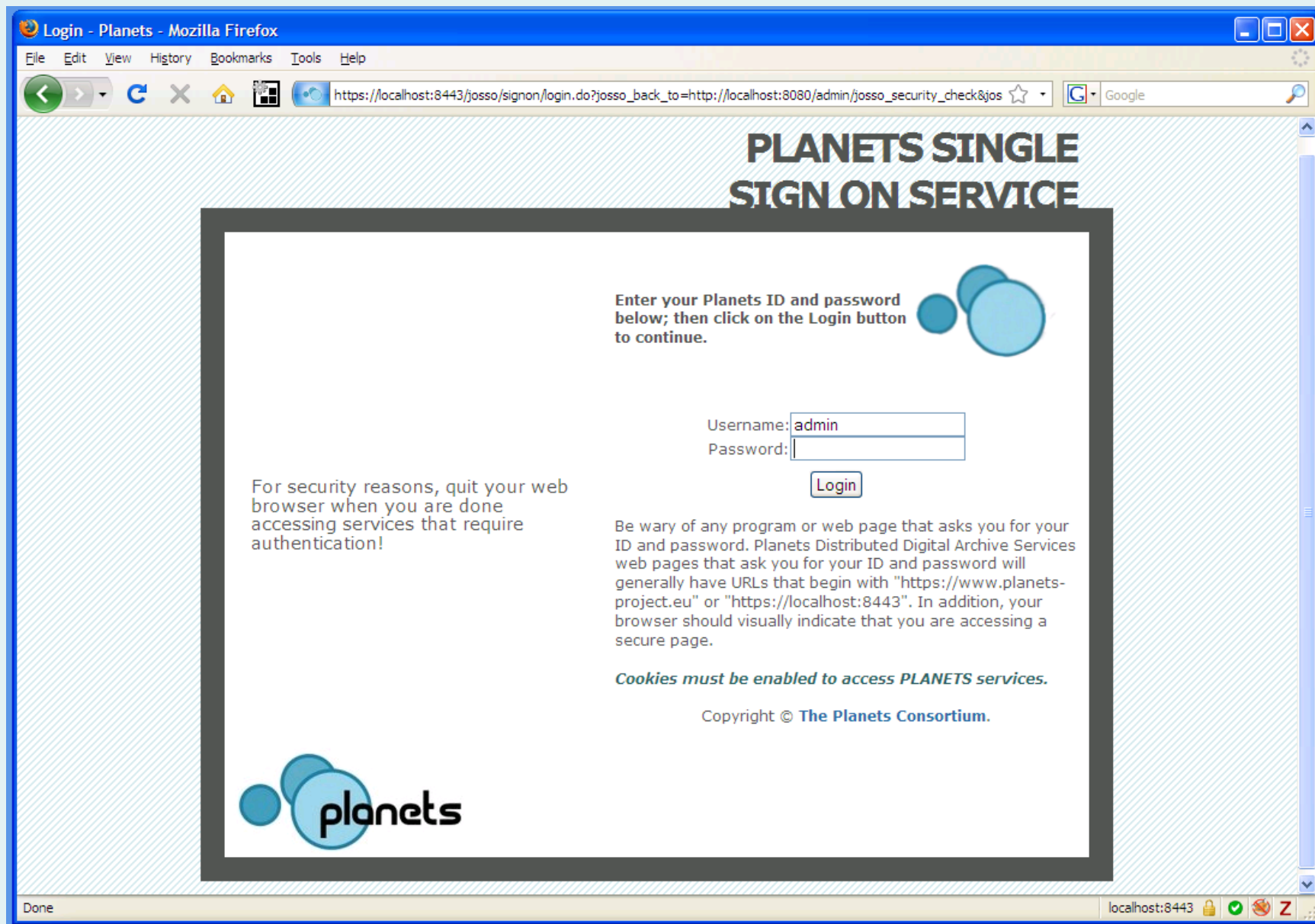
# Putting it all together

---

- ❑ Planets can be installed on workstations or servers
- ❑ Installation package from Planets provides:
  - Its own software
  - The underlying utilities and server engines required to run it
  - An initial selection of preservation tools
  - Comes with some preconfigured user accounts
- ❑ Initiate the JBOSS engine (Command Line Interface)
- ❑ Connect to use Planets

URL: <http://localhost:8080>







**BUT.....**

